

AGENDA

MEETING OF THE BOARD OF TRUSTEES OF SOUTHERN ILLINOIS UNIVERSITY

Thursday, July 10, 2025
Approximately 10 a.m.

Auditorium, SIU School of Medicine
801 North Rutledge
Springfield, Illinois
Also available via live stream video at siusystem.edu

Call to Order by Chair

Roll Call

Election of Executive Committee and Appointments by the Chair

Meeting of the Board of Trustees (Regular Session) recesses for Board Committee Meetings

Approval of Minutes of the Meeting Held April 16 and 17, 2025

BOARD OF TRUSTEES ACTIVITIES

A. Trustee Reports

B. Committee Reports

Executive Committee

PUBLIC COMMENTS AND QUESTIONS

EXECUTIVE OFFICER REPORTS

C. Chancellor, Southern Illinois University Carbondale

(1) Dean and Provost, Southern Illinois University School of Medicine

D. Chancellor, Southern Illinois University Edwardsville

E. President, Southern Illinois University

RECEIPT OF INFORMATION AND NOTICE ITEMS

F. Report of Purchase Orders and Contracts, March, April and May 2025, SIUC

G. Report of Purchase Orders and Contracts, March, April and May 2025, SIUE

- H. Approval of New Programs, Reasonable and Moderate Extensions, Approval of Off-Campus Program Locations, and Academic Program Eliminations and Suspensions, July 1, 2024 through June 30, 2025

RATIFICATION OF PERSONNEL MATTERS

- I. Changes in Faculty-Administrative Payroll - SIUC
- J. Changes in Faculty-Administrative Payroll – SIUE

ITEMS RECOMMENDED FOR APPROVAL BY THE PRESIDENT

- K. Approval of Salary and Appointment: Executive Director of Audit, Southern Illinois University System
- L. Approval of Purchase: Beverage, Snacks and Vending Services, SIUC
- M. Approval of Purchase: Technical Services for Center for Workforce Development, School of Education, SIUC
- N. Approval of Purchase: Software License Contract, Southern Illinois University System
- O. Approval of Purchase: Trash and Recycling Removal Services, Edwardsville Campus, SIUE
- P. Approval to Acquire Real Estate: 529 West Miller and 640 West Hernon, Springfield, Illinois, School of Medicine, SIUC
- Q. Approval to Acquire Real Estate: 3421 Conifer Drive, Springfield, School of Medicine, SIUC
- R. Approval of Incentive Compensation for Chancellor, SIUC
- S. Approval of Incentive Compensation for SIU President
- T. Approval: Removal of University Hall From Revenue Bond System and Reassignment to the College of Health and Human Services, Carbondale Campus, SIUC
- U. Project Approval: Public Electric Vehicle Charging Partnership with Egyptian Electric Cooperative Association, Carbondale Campus, SIUC
- V. Approval to Grant Easements to the City of Carbondale, Carbondale Campus, SIUC

- W. Project Approval and Notice of Award of Contracts by Capital Development Board: Springfield Combined Lab Facility Chillers and Cooling Towers Replacement, School of Medicine, SIUC
- X. Approval to Grant Permanent Utility Easements to the City of Springfield, School of Medicine, SIUC
- Y. Approval to Grant Reciprocal Drainage Easement to Memorial Medical Center, School of Medicine, SIUC
- Z. Project and Budget Approval: Demolition of Various University Structures, Carbondale Campus, SIUC

Honoring Resolutions

Adjournment

Southern Illinois University
Board of Trustees
July 10, 2025

SUMMARY REPORT OF PURCHASE ORDERS AND CONTRACTS
AWARDED DURING THE MONTH OF MARCH 2025
SOUTHERN ILLINOIS UNIVERSITY CARBONDALE

| Section | Quantity | Amount |
|------------------------------------------|-----------------|----------------|
| Less than the state required bid limit | 38 | \$946,233.86 |
| State required bid limit to \$999,999.99 | 1 | \$413,450.00 |
| \$1,000,000.00 and over | 1 | \$1,682,500.00 |
| Total | 40 | \$3,042,183.86 |

SOUTHERN ILLINOIS UNIVERSITY CARBONDALE
DETAILED REPORT OF PURCHASE ORDERS AND CONTRACTS OF
LESS THAN STATE REQUIRED BID LIMIT
AWARDED DURING THE MONTH OF MARCH 2025

| <u>Transactions Under State Required Bid Limit</u> | <u>Quantity</u> | <u>Amount</u> |
|----------------------------------------------------|-----------------|---------------|
| | 38 | \$946,233.86 |

SOUTHERN ILLINOIS UNIVERSITY CARBONDALE
DETAILED REPORT OF PURCHASE ORDERS AND CONTRACTS OF
STATE REQUIRED BID LIMIT TO \$999,999
AWARDED DURING THE MONTH OF MARCH 2025

| <u>Purchase Orders and Contracts of State Required Bid Limit to \$999,999:</u> <i>Plant Funds – Non-Appropriated</i> | | | |
|--------------------------------------------------------------------------------------------------------------------------------|-------------------------------------------------------------|--------------------------------------------------------------------------------------------------------|---------------|
| <u>No.</u> | <u>Vendor</u> | <u>Description</u> | <u>Amount</u> |
| 152942 | Landmark Ford Incorporated Springfield, IL 62711-9485 | Ten new Ford Edge SUVs for Travel Services. Price includes eleven trade-ins. <i>IFB T121824</i> | \$413,450.00 |

SOUTHERN ILLINOIS UNIVERSITY CARBONDALE
DETAILED REPORT OF PURCHASE ORDERS AND CONTRACTS OF
\$1,000,000 AND OVER
AWARDED DURING THE MONTH OF MARCH 2025

| <u>Purchase Orders and Contracts of \$1,000,000 and Over:</u> <i>Service Department Funds</i> | | | |
|---------------------------------------------------------------------------------------------------------|---------------------------------------------------------------------|-------------------------------------------------------------------------------------|----------------|
| <u>No.</u> | <u>Vendor</u> | <u>Description</u> | <u>Amount</u> |
| 152940 | W J Burke Electric Company Incorporated Murphysboro, IL 62966 | Replace the existing fire alarm system at Schneider Hall. <i>IFB A110124</i> | \$1,682,500.00 |

SUMMARY REPORT OF PURCHASE ORDERS AND CONTRACTS
AWARDED DURING THE MONTH OF APRIL 2025
SOUTHERN ILLINOIS UNIVERSITY CARBONDALE

| Section | Quantity | Amount |
|------------------------------------------|-----------------|----------------|
| Less than the state required bid limit | 35 | \$1,136,414.79 |
| State required bid limit to \$999,999.99 | 5 | \$732,626.83 |
| \$1,000,000.00 and over | 1 | \$2,297,825.00 |
| Total | 40 | \$4,166,866.62 |

SOUTHERN ILLINOIS UNIVERSITY CARBONDALE
DETAILED REPORT OF PURCHASE ORDERS AND CONTRACTS OF
LESS THAN STATE REQUIRED BID LIMIT
AWARDED DURING THE MONTH OF APRIL 2025

| <u>Transactions Under State Required Bid Limit</u> | <u>Quantity</u> | <u>Amount</u> |
|----------------------------------------------------|-----------------|----------------|
| | 35 | \$1,136,414.79 |

SOUTHERN ILLINOIS UNIVERSITY CARBONDALE
DETAILED REPORT OF PURCHASE ORDERS AND CONTRACTS OF
STATE REQUIRED BID LIMIT TO \$999,999
AWARDED DURING THE MONTH OF APRIL 2025

| <u>Purchase Orders and Contracts of State Required Bid Limit to \$999,999:</u> <i>Service Department Funds</i> | | | |
|--------------------------------------------------------------------------------------------------------------------------|-----------------------------------------------------------|--------------------------------------------------------------------------------------------------------------------------------------------------------------------------------------------------------------------------------------------------------|---------------|
| <u>No.</u> | <u>Vendor</u> | <u>Description</u> | <u>Amount</u> |
| 152997 | Carrier Corporation Maryland Heights, MO 63043-3710 | Repair of Quigley Hall Chiller. Commercial services to disassemble compressors and inspect bearings, gaskets, and overhaul compressors. Diagnose, replace necessary parts, reassemble, add refrigerant, full startup and clean. <i>IFB 1806</i> | \$129,482.00 |

| <u>Purchase Orders and Contracts of State Required Bid Limit to \$999,999:</u> <i>Service Department Funds</i> | | | |
|--------------------------------------------------------------------------------------------------------------------------|--------------------------------------------------------|---------------------------------------------------------------------------------------------------------------------------------------------------------------------------------------------------------------|---------------|
| <u>No.</u> | <u>Vendor</u> | <u>Description</u> | <u>Amount</u> |
| 153403 | A-1 Lock Incorporated Springfield, IL 62701-1201 | Purchase of 152 security cameras, mounting accessories, and licenses for the thirty-nine Evergreen Terrace apartment buildings. Four cameras per building. <i>CMS Contract 21-416CMS-BOPM4-B-20074</i> | \$195,038.80 |

| <u>Purchase Orders and Contracts of State Required Bid Limit to \$999,999:</u> <i>Multi-Account Distributions</i> | | | |
|-----------------------------------------------------------------------------------------------------------------------------|-------------------------------------------------------------|------------------------------------------------------------------------------------------------------------------------------------------------------------------------------------------------------------------------------------------------------------------------------------------------------------------------------------------------------------------------------------------------------------------------------------------------|---------------|
| <u>No.</u> | <u>Vendor</u> | <u>Description</u> | <u>Amount</u> |
| 153422 | Chicago Winds, Incorporated Chicago, IL 60659-4418 | <p>Planned Purchase Order for the period through June 9, 2025, for coordinating and hiring musicians for the Spring 2025 Southern Illinois Symphony Orchestra and the Southern Illinois Music Festival May 23, 2025, through June 9, 2025.</p> <p><i>Non-Appropriated Funds for General Education</i> \$104,950.00</p> <p><i>Restricted Funds for General Education</i> \$10,050.00</p> <p><i>Exemption 30 ILCS 500/1-13(b)(4)</i></p> | \$115,000.00 |

| <u>Purchase Orders and Contracts of State Required Bid Limit to \$999,999:</u> <i>Restricted Funds for General Education</i> | | | |
|----------------------------------------------------------------------------------------------------------------------------------------|----------------------------------------------------------------------------------------|--------------------------------------------------------------------------------------------------------------------------------------------------------------------------------------------------------------------|---------------|
| <u>No.</u> | <u>Vendor</u> | <u>Description</u> | <u>Amount</u> |
| 153434 | Innovasea Marine Systems Canada Incorporated Bedford, Nova Scotia B4B 0L9 Canada | <p>Nextrak R1 aquatic acoustic receivers, transmitters, and sensors to record invasive carp movement behavior, habitat use, and population in the Wabash River.</p> <p><i>Exemption 30 ILCS 500/1-13(b)(8)</i></p> | \$173,175.03 |

| <u>Purchase Orders and Contracts of State Required Bid Limit to \$999,999:</u> <i>Plant Funds – Non-Appropriated</i> | | | |
|--------------------------------------------------------------------------------------------------------------------------------|----------------------------------------------------------------------|----------------------------------------------------------------------------------------------------------------------------------------------------|---------------|
| <u>No.</u> | <u>Vendor</u> | <u>Description</u> | <u>Amount</u> |
| 153238 | Morrow Brothers Ford Incorporated Greenfield, IL 62044-1626 | Purchase of three new never titled 2023 model year Ford Transit Connection Vans. Price includes three trade-in vehicles. <i>IFB T012425</i> | \$119,931.00 |

SOUTHERN ILLINOIS UNIVERSITY CARBONDALE
DETAILED REPORT OF PURCHASE ORDERS AND CONTRACTS OF
\$1,000,000 AND OVER
AWARDED DURING THE MONTH OF APRIL 2025

| <u>Purchase Orders and Contracts of \$1,000,000 and Over:</u> <i>Service Department Funds</i> | | | |
|---------------------------------------------------------------------------------------------------------|---------------------------------------------------------------------|-------------------------------------------------------------------------------------------------------------------------------------------------------------------------------------------------------------------------------------------------------------------------------|----------------|
| <u>No.</u> | <u>Vendor</u> | <u>Description</u> | <u>Amount</u> |
| 153409 | OWP/P Cannon Design Incorporated Chicago, IL 60601-7683 | Development of a comprehensive masterplan that will assess and optimize facilities and infrastructure. Determine space requirements. Identify key academic needs. Explore growth potential and conduct in depth departmental cost benefit analysis. <i>QBS AQBS422</i> | \$2,297,825.00 |

SUMMARY REPORT OF PURCHASE ORDERS AND CONTRACTS
AWARDED DURING THE MONTH OF MAY 2025
SOUTHERN ILLINOIS UNIVERSITY CARBONDALE

| Section | Quantity | Amount |
|------------------------------------------|-----------------|----------------|
| Less than the state required bid limit | 35 | \$885,636.33 |
| State required bid limit to \$999,999.99 | 1 | \$230,000.00 |
| \$1,000,000.00 and over | 1 | \$8,000,000.00 |
| Total | 37 | \$9,115,636.33 |

SOUTHERN ILLINOIS UNIVERSITY CARBONDALE
DETAILED REPORT OF PURCHASE ORDERS AND CONTRACTS OF
LESS THAN STATE REQUIRED BID LIMIT
AWARDED DURING THE MONTH OF MAY 2025

| <u>Transactions Under State Required Bid Limit</u> | <u>Quantity</u> | <u>Amount</u> |
|----------------------------------------------------|-----------------|---------------|
| | 35 | \$885,636.33 |

SOUTHERN ILLINOIS UNIVERSITY CARBONDALE
DETAILED REPORT OF PURCHASE ORDERS AND CONTRACTS OF
STATE REQUIRED BID LIMIT TO \$999,999
AWARDED DURING THE MONTH OF MAY 2025

| <u>Purchase Orders and Contracts of State Required Bid Limit to \$999,999:</u> <i>Service Department Funds</i> | | | |
|--------------------------------------------------------------------------------------------------------------------------|----------------------------------------------------------------------------------|-----------------------------------------------------------------------------------------------------------------------------------------------------------------------------------------------------------------------------------------------------------------------------------------------------------------------------------------------------|---------------|
| <u>No.</u> | <u>Vendor</u> | <u>Description</u> | <u>Amount</u> |
| 153812 | Dynamic Interactive Business System Incorporated Naperville, IL 60564-1106 | Maintenance and license fees for the campus' Extreme Networking equipment for the period of June 1, 2025 through May 31, 2026. The campus data network is comprised of Cisco and Extreme Networks technology, with core routing, data center networking, and campus wireless networks primarily based on Extreme hardware. <i>IPHEC 2140</i> | \$230,000.00 |

SOUTHERN ILLINOIS UNIVERSITY CARBONDALE
DETAILED REPORT OF PURCHASE ORDERS AND CONTRACTS OF
\$1,000,000 AND OVER
AWARDED DURING THE MONTH OF MAY 2025

| <u>Purchase Orders and Contracts of \$1,000,000 and Over:</u> <i>Service Department Funds</i> | | | |
|---------------------------------------------------------------------------------------------------------|--------------------------------------------------------------------------------------------------|-------------------------------------------------------------------------------------------------------------------------------------------------------------------------------------------------------------------|----------------|
| <u>No.</u> | <u>Vendor</u> | <u>Description</u> | <u>Amount</u> |
| 153479 | NRG Energy Incorporated DBA Direct Energy Business, LLC. Princeton, NJ 08540-6023 | Planned Purchase order for the period through June 30, 2025, to provide electrical service for the SIU Carbondale campus. Year 1 of 3. Contract total \$24,000,000.00 <i>RFP EIUMJT2501</i> | \$8,000,000.00 |

SUMMARY REPORT OF PURCHASE ORDERS AND CONTRACTS
AWARDED DURING THE MONTH OF MARCH 2025
SOUTHERN ILLINOIS UNIVERSITY SCHOOL OF MEDICINE

| Section | Quantity | Amount |
|------------------------------------------|----------|--------------|
| Less than the State Required Bid Limit | 53 | \$608,197.10 |
| State Required Bid Limit to \$999,999.99 | 2 | \$220,000.00 |
| \$1,000,000.00 and Over | 0 | \$0.00 |
| Total | 55 | \$828,197.10 |

SOUTHERN ILLINOIS UNIVERSITY SCHOOL OF MEDICINE
DETAILED REPORT OF PURCHASE ORDERS AND CONTRACTS OF
LESS THAN STATE REQUIRED BID LIMIT
AWARDED DURING THE MONTH MARCH 2025

| <u>Transactions Under State Required Bid Limit</u> | <u>Quantity</u> | <u>Amount</u> |
|----------------------------------------------------|-----------------|---------------|
| | 53 | \$608,197.10 |

SOUTHERN ILLINOIS UNIVERSITY SCHOOL OF MEDICINE
DETAILED REPORT OF PURCHASE ORDERS AND CONTRACTS OF
STATE REQUIRED BID LIMIT TO \$999,999.99
AWARDED DURING THE MONTH OF MARCH 2025

| <u>Purchase Orders and Contracts of State Required Bid Limit to \$999,999:</u> <i><u>Non-appropriated Funds General Educational Operations</u></i> | | | |
|--------------------------------------------------------------------------------------------------------------------------------------------------------------|-------------------------------------------------------------------|---------------------------------------------------------------------------------------------------------------------------------------------------------------------------------------------------------------------------------------------------------------------|---------------|
| <u>No.</u> | <u>Vendor</u> | <u>Description</u> | <u>Amount</u> |
| 153013 | On-Site Studios LLC Green Bay, WI | Provide on-site equipment, video services, editing, data storage and other necessary services to meet the health literacy needs for various OCM initiatives for Office of Correctional Medicine, Springfield, for the period of May 1, 2025 through April 30, 2026. | \$120,000.00 |
| 153084 | Aldi Incorporated Aldi Gift Card Fulfillment Batavia, IL | Funds to purchase food certificates for emergency purchases for Ryan White program participants for Internal Medicine, Springfield, for the period of April 1, 2025 through March 31, 2026. | \$100,000.00 |

SUMMARY REPORT OF PURCHASE ORDERS AND CONTRACTS
AWARDED DURING THE MONTH OF APRIL 2025
SOUTHERN ILLINOIS UNIVERSITY SCHOOL OF MEDICINE

| Section | Quantity | Amount |
|------------------------------------------|----------|----------------|
| Less than the State Required Bid Limit | 58 | \$1,086,154.00 |
| State Required Bid Limit to \$999,999.99 | 5 | \$773,545.80 |
| \$1,000,000.00 and Over | 0 | \$0.00 |
| Total | 63 | \$1,859,699.80 |

SOUTHERN ILLINOIS UNIVERSITY SCHOOL OF MEDICINE
DETAILED REPORT OF PURCHASE ORDERS AND CONTRACTS OF
LESS THAN STATE REQUIRED BID LIMIT
AWARDED DURING THE MONTH APRIL 2025

| <u>Transactions Under State Required Bid Limit</u> | <u>Quantity</u> | <u>Amount</u> |
|----------------------------------------------------|-----------------|----------------|
| | 58 | \$1,086,154.00 |

SOUTHERN ILLINOIS UNIVERSITY SCHOOL OF MEDICINE
DETAILED REPORT OF PURCHASE ORDERS AND CONTRACTS OF
STATE REQUIRED BID LIMIT TO \$999,999.99
AWARDED DURING THE MONTH OF APRIL 2025

| <u>Purchase Orders and Contracts of State Required Bid Limit to \$999,999:</u> <i><u>Non-appropriated Funds General Educational Operations</u></i> | | | |
|--------------------------------------------------------------------------------------------------------------------------------------------------------------|-----------------------------------------------------------|----------------------------------------------------------------------------------------------------------------------------------------------------------|---------------|
| <u>No.</u> | <u>Vendor</u> | <u>Description</u> | <u>Amount</u> |
| 153198 | Core Construction Services of Illinois Inc. Peoria, IL | Removal and replacement of the BSL3 autoclave and associated equipment. | \$132,992.00 |
| 153213 | Springfield Clinic LLP Springfield, IL | GYNONC On-call services provided by Dr. Nora MacZura for OBGYN Clinic, Springfield, for the period May 3, 2025 through May 2, 2026. | \$210,000.00 |
| 153363 | Memorial Health System Springfield, IL | Rental of space located at 201 E. Madison, Springfield, for FCM, Springfield, for the period of May 1, 2025 through June 30, 2025. | \$208,653.80 |
| 153407 | Simbionix USA Corporation Beachwood, OH | Endo Suite Simulator – GI Bronch and service contract. | \$107,900.00 |
| 153477 | AT&T Corporation Chicago, IL | Year 2 of a 3 year contract for purchase of Telecommunication Services for IPFlex (SIP) 3 year, for the period of April 15, 2024 through April 14, 2027. | \$114,000.00 |

SUMMARY REPORT OF PURCHASE ORDERS AND CONTRACTS
AWARDED DURING THE MONTH OF MAY 2025
SOUTHERN ILLINOIS UNIVERSITY SCHOOL OF MEDICINE

| Section | Quantity | Amount |
|------------------------------------------|----------|----------------|
| Less than the State Required Bid Limit | 44 | \$926,945.30 |
| State Required Bid Limit to \$999,999.99 | 3 | \$604,795.00 |
| \$1,000,000.00 and Over | 0 | \$0.00 |
| Total | 47 | \$1,531,740.30 |

SOUTHERN ILLINOIS UNIVERSITY SCHOOL OF MEDICINE
DETAILED REPORT OF PURCHASE ORDERS AND CONTRACTS OF
LESS THAN STATE REQUIRED BID LIMIT
AWARDED DURING THE MONTH MAY 2025

| <u>Transactions Under State Required Bid Limit</u> | <u>Quantity</u> | <u>Amount</u> |
|----------------------------------------------------|-----------------|---------------|
| | 44 | \$926,945.30 |

SOUTHERN ILLINOIS UNIVERSITY SCHOOL OF MEDICINE
DETAILED REPORT OF PURCHASE ORDERS AND CONTRACTS OF
STATE REQUIRED BID LIMIT TO \$999,999.99
AWARDED DURING THE MONTH OF MAY 2025

| <u>Purchase Orders and Contracts of State Required Bid Limit to \$999,999:</u> <i><u>Non-appropriated Funds General Educational Operations</u></i> | | | |
|--------------------------------------------------------------------------------------------------------------------------------------------------------------|-----------------------------------------------------------|---------------------------------------------------------------------------------------------------------------------------------------------------------------|---------------|
| <u>No.</u> | <u>Vendor</u> | <u>Description</u> | <u>Amount</u> |
| 153661 | Core Construction Services of Illinois Inc. Peoria, IL | 825A rooms 3606 & 3609 upgrade AV technology equipment. | \$105,085.00 |
| 153789 | Hudec John MD Springfield, IL | OBGYN twenty-four hour on call services, approximately two days per week, for OBGYN Clinic, Springfield, for the period of May 17, 2025 through May 16, 2026. | \$310,000.00 |
| 153976 | Land of Lincoln Legal Aid Inc. East Saint Louis, IL | Grant Subcontract Medical/Legal Partnership for Family and Community Medicine, Springfield for the period of May 30, 2025 through April 30, 2026. | \$189,710.00 |

Southern Illinois University
Board of Trustees
July 10, 2025

SUMMARY REPORT OF PURCHASE ORDERS AND CONTRACTS
AWARDED DURING THE MONTH OF MARCH 2025
SOUTHERN ILLINOIS UNIVERSITY EDWARDSVILLE

| Section | Quantity | Amount |
|------------------------------------------|-----------------|----------------|
| Less than the State Required Bid Limit | 2,661 | \$2,367,994.94 |
| State Required Bid Limit to \$999,999.99 | 7 | \$3,243,309.62 |
| \$1,000,000.00 and Over | 0 | \$0.00 |
| Total | 2,667 | \$5,611,304.56 |

SOUTHERN ILLINOIS UNIVERSITY EDWARDSVILLE
DETAILED REPORT OF PURCHASE ORDERS AND CONTRACTS OF
LESS THAN STATE REQUIRED BID LIMIT
AWARDED DURING THE MONTH OF MARCH 2025

| <u>Transactions Under State Required Bid Limit</u> | <u>Quantity</u> | <u>Amount</u> |
|----------------------------------------------------|-----------------|----------------|
| | 2,661 | \$2,367,994.94 |

SOUTHERN ILLINOIS UNIVERSITY EDWARDSVILLE
DETAILED REPORT OF PURCHASE ORDERS AND CONTRACTS OF
STATE REQUIRED BID LIMIT TO \$999,999
AWARDED DURING THE MONTH OF MARCH 2025

| <u>Purchase Orders and Contracts of State Required Bid Limit to \$999,999:</u> <i>State Appropriated and Income Funds for General Educational Operations</i> | | | |
|------------------------------------------------------------------------------------------------------------------------------------------------------------------------|-----------------------------------------------------------|----------------------------------------------------------------------|---------------|
| <u>No.</u> | <u>Vendor</u> | <u>Description</u> | <u>Amount</u> |
| 153029 | EBSCO Industries Incorporated Cary, Illinois | Access to Sage Premier Collection. 01/01/2025 – 12/31/2025 | \$112,889.27 |

| <u>Purchase Orders and Contracts of State Required Bid Limit to \$999,999:</u> <i>Service Cash</i> | | | |
|--------------------------------------------------------------------------------------------------------------|----------------------------------------------------------------------------------|--------------------------------------------------------------------------------------------------------------------|---------------|
| <u>No.</u> | <u>Vendor</u> | <u>Description</u> | <u>Amount</u> |
| 153042 | Neumann Company Contractors Incorporated Merrillan, Wisconsin | Labor, materials, and equipment to renovate the Water Tower. | \$437,500.00 |
| 153064 | Commercial Flooring Incorporated Fenton, Missouri | Labor, equipment, and material to complete flooring upgrades in the north and west wings of Prairie Hall. | \$196,934.00 |

| <u>Purchase Orders and Contracts of State Required Bid Limit to \$999,999:</u> <i>Service Cash</i> | | | |
|--------------------------------------------------------------------------------------------------------------|----------------------------------------------------------------|------------------------------------------------------------------|---------------|
| <u>No.</u> | <u>Vendor</u> | <u>Description</u> | <u>Amount</u> |
| 153157 | Baer Heating and Cooling Incorporated Trenton, Illinois | Labor, materials, and equipment to upgrade HVAC System in NCERC. | \$835,146.00 |

| <u>Purchase Orders and Contracts of State Required Bid Limit to \$999,999:</u> <i>Non-Appropriated Funds for General Educational Purposes</i> | | | |
|---------------------------------------------------------------------------------------------------------------------------------------------------------|-------------------------------------------------|-------------------------------------------------------------------------------------------|---------------|
| <u>No.</u> | <u>Vendor</u> | <u>Description</u> | <u>Amount</u> |
| 153134 | Custom Jim Bob LLC Saint Louis, Missouri | Equipment & labor to install Transmitter and Antenna Replacement for WSIE 88.7 The Sound. | \$449,840.35 |

| <u>Purchase Orders and Contracts of State Required Bid Limit to \$999,999:</u> <i>Auxiliary Funds</i> | | | |
|-----------------------------------------------------------------------------------------------------------------|-----------------------------------------------------------------------|---------------------------------------------------------------------------------|---------------|
| <u>No.</u> | <u>Vendor</u> | <u>Description</u> | <u>Amount</u> |
| 153085 | Rooters American Maintenance Incorporated Beckemeyer, Illinois | Labor, equipment, and materials to expand Simmons Baseball Complex Parking Lot. | \$361,000.00 |

| <u>Purchase Orders and Contracts of State Required Bid Limit to \$999,999:</u> <i>Restricted Funds for General Educational Purposes</i> | | | |
|---------------------------------------------------------------------------------------------------------------------------------------------------|-----------------------------------------------------|--------------------------------------------------------------|---------------|
| <u>No.</u> | <u>Vendor</u> | <u>Description</u> | <u>Amount</u> |
| 153050 | University of Illinois Springfield, Illinois | Develop the e-learning Digiscape curriculum for PROWD grant. | \$850,000.00 |

SUMMARY REPORT OF PURCHASE ORDERS AND CONTRACTS
AWARDED DURING THE MONTH OF APRIL 2025
SOUTHERN ILLINOIS UNIVERSITY EDWARDSVILLE

| Section | Quantity | Amount |
|------------------------------------------|-----------------|----------------|
| Less than the State Required Bid Limit | 2,834 | \$3,312,118.31 |
| State Required Bid Limit to \$999,999.99 | 8 | \$1,769,334.67 |
| \$1,000,000.00 and Over | 0 | \$0.00 |
| Total | 2,842 | \$5,081,452.98 |

SOUTHERN ILLINOIS UNIVERSITY EDWARDSVILLE
DETAILED REPORT OF PURCHASE ORDERS AND CONTRACTS OF
LESS THAN STATE REQUIRED BID LIMIT
AWARDED DURING THE MONTH OF APRIL 2025

| <u>Transactions Under State Required Bid Limit</u> | <u>Quantity</u> | <u>Amount</u> |
|----------------------------------------------------|-----------------|----------------|
| | 2,834 | \$3,312,118.31 |

SOUTHERN ILLINOIS UNIVERSITY EDWARDSVILLE
DETAILED REPORT OF PURCHASE ORDERS AND CONTRACTS OF
STATE REQUIRED BID LIMIT TO \$999,999
AWARDED DURING THE MONTH OF APRIL 2025

| <u>Purchase Orders and Contracts of State Required Bid Limit to \$999,999:</u> <i>State Appropriated and Income Funds for General Educational Operations</i> | | | |
|------------------------------------------------------------------------------------------------------------------------------------------------------------------------|-----------------------------------------------------------|----------------------------------------------------------------------------------------------------------------|---------------|
| <u>No.</u> | <u>Vendor</u> | <u>Description</u> | <u>Amount</u> |
| 153336 | EBSCO Industries Incorporated Cary, Illinois | Access to Wiley Core Collection, BML articles, and Wiley STM Collections. 01/01/2025 - 12/31/2025 | \$109,208.66 |

| <u>Purchase Orders and Contracts of State Required Bid Limit to \$999,999:</u> <i>Service Cash</i> | | | |
|--------------------------------------------------------------------------------------------------------------|---------------------------------------------------------------------------------|----------------------------------------------------------------------------------------------------------------------------------|---------------|
| <u>No.</u> | <u>Vendor</u> | <u>Description</u> | <u>Amount</u> |
| 153281 | Bruce Unterbrink Construction Incorporated Greenville, Illinois | Labor, equipment, and materials to create office space in the Lovejoy Library for the John Martinson Honors Program. | \$363,577.00 |
| 153348 | Conference Technologies Incorporated Maryland Heights, Missouri | Purchase & installation of AV equipment for the new Health Sciences Building on the Edwardsville Campus. | \$238,302.64 |

| <u>Purchase Orders and Contracts of State Required Bid Limit to \$999,999:</u> <i>Service Cash</i> | | | |
|--------------------------------------------------------------------------------------------------------------|------------------------------------------------------------|-------------------------------------------------------------------------------------------------|---------------|
| <u>No.</u> | <u>Vendor</u> | <u>Description</u> | <u>Amount</u> |
| 153354 | Modern Communications Incorporated Fenton, Missouri | Equipment, installation, and commissioning of equipment for the Mass Communications Department. | \$194,032.00 |
| 153510 | Howmedica Osteonics Corporation Flower Mound, Texas | Purchase and Installation of equipment for Health Sciences Building. | \$167,695.15 |

| <u>Purchase Orders and Contracts of State Required Bid Limit to \$999,999:</u> <i>Non-Appropriated Funds for General Educational Purposes</i> | | | |
|---------------------------------------------------------------------------------------------------------------------------------------------------------|----------------------------------------------------|----------------------------------------------------------------------------------------------------------------|---------------|
| <u>No.</u> | <u>Vendor</u> | <u>Description</u> | <u>Amount</u> |
| 153282 | Wedge Innovation Center LLC Alton, Illinois | Partnership to provide area businesses a facility for professional development. 07/01/2024 – 06/30/2025 | \$250,000.00 |

| <u>Purchase Orders and Contracts of State Required Bid Limit to \$999,999:</u> <i>Auxiliary Funds</i> | | | |
|-----------------------------------------------------------------------------------------------------------------|--------------------------------------------------------|---------------------------------------------------------------------------------------------------------------|---------------|
| <u>No.</u> | <u>Vendor</u> | <u>Description</u> | <u>Amount</u> |
| 153389 | T2 Systems Incorporated Indianapolis, Indiana | T2 Systems Parking Management System for Parking Services. 05/01/2025 - 04/30/2026 | \$240,226.22 |
| 153408 | Daktronics Incorporated Brookings, South Dakota | Labor, equipment, and material to upgrade the hardware/software for the (6) LED signs around the SIUE campus. | \$206,293.00 |

SUMMARY REPORT OF PURCHASE ORDERS AND CONTRACTS
AWARDED DURING THE MONTH OF MAY 2025
SOUTHERN ILLINOIS UNIVERSITY EDWARDSVILLE

| Section | Quantity | Amount |
|------------------------------------------|-----------------|----------------|
| Less than the State Required Bid Limit | 3,057 | \$4,213,322.06 |
| State Required Bid Limit to \$999,999.99 | 10 | \$2,550,461.31 |
| \$1,000,000.00 and Over | 0 | \$0.00 |
| Total | 3,067 | \$6,763,783.37 |

SOUTHERN ILLINOIS UNIVERSITY EDWARDSVILLE
DETAILED REPORT OF PURCHASE ORDERS AND CONTRACTS OF
LESS THAN STATE REQUIRED BID LIMIT
AWARDED DURING THE MONTH OF MAY 2025

| <u>Transactions Under State Required Bid Limit</u> | <u>Quantity</u> | <u>Amount</u> |
|----------------------------------------------------|-----------------|----------------|
| | 3,057 | \$4,213,322.06 |

SOUTHERN ILLINOIS UNIVERSITY EDWARDSVILLE
DETAILED REPORT OF PURCHASE ORDERS AND CONTRACTS OF
STATE REQUIRED BID LIMIT TO \$999,999
AWARDED DURING THE MONTH OF MAY 2025

| <u>Purchase Orders and Contracts of State Required Bid Limit to \$999,999:</u> <i>Service Cash</i> | | | |
|--------------------------------------------------------------------------------------------------------------|--------------------------------------------------------------------|-----------------------------------------------------------------------------------------------------------------------------------------------------|---------------|
| <u>No.</u> | <u>Vendor</u> | <u>Description</u> | <u>Amount</u> |
| 153592 | Louer Facility Planning Incorporated Collinsville, Illinois | Installation and delivery of Office Furniture, reupholster existing furniture, move existing furniture out of storage for Health Sciences Building. | \$312,276.80 |
| 153593 | Haworth Incorporated Holland, Michigan | Furniture for the School of Pharmacy in the Health Sciences Building. | \$162,278.24 |
| 153594 | OFS Brands Incorporated Huntingburg, Indiana | Furniture for the School of Pharmacy in the Health Sciences Building. | \$127,140.31 |
| 153596 | Krueger International Incorporated Green Bay, Wisconsin | Furniture for the School of Pharmacy in the Health Sciences Building. | \$194,139.31 |

| Purchase Orders and Contracts of State Required Bid Limit to \$999,999: <i>Service Cash</i> | | | |
|-------------------------------------------------------------------------------------------------------|-------------------------------------------------------------------------------------------|----------------------------------------------------------------------------------------------------------------------------|---------------|
| <u>No.</u> | <u>Vendor</u> | <u>Description</u> | <u>Amount</u> |
| 153774 | Pyramid Electrical Contractors Incorporated Fairview Heights, Illinois | Labor, materials, and equipment to upgrade the Prairie Hall fire alarm system all in accordance with RFQ 2391. | \$178,607.00 |
| 153810 | Trane U S Incorporated Fenton, Missouri | Furnish new mechanical rooftop unit for ESL campus. | \$139,500.00 |
| 153843 | AllSteel Incorporated Muscatine, Iowa | Furniture and installation at the School of Nursing in the Health Sciences Building. | \$994,030.11 |

| Purchase Orders and Contracts of State Required Bid Limit to \$999,999: <i>Auxiliary Funds</i> | | | |
|----------------------------------------------------------------------------------------------------------|------------------------------------------------------------------|------------------------------------------------------------------------------------------------------------|---------------|
| <u>No.</u> | <u>Vendor</u> | <u>Description</u> | <u>Amount</u> |
| 153932 | Flooring Systems Incorporated Saint Louis, Missouri | Labor, tools, equipment, and material to complete flooring work in the MUC, Level 2 common areas. | \$121,455.00 |

| Purchase Orders and Contracts of State Required Bid Limit to \$999,999: <i>Restricted Funds for General Educational Purposes</i> | | | |
|--------------------------------------------------------------------------------------------------------------------------------------------|---------------------------------------------------------------------|------------------------------------------------------------------------------|---------------|
| <u>No.</u> | <u>Vendor</u> | <u>Description</u> | <u>Amount</u> |
| 153926 | Laerdal Medical Corporation Wappingers Falls, New York | Purchase of MamaAnne Dark Manikin, SimNewB, installation and warranty. | \$108,578.54 |

| <u>Purchase Orders and Contracts of State Required Bid Limit to \$999,999:</u> | | | |
|---------------------------------------------------------------------------------------|-----------------------------------------------------|-----------------------------------------------------------|---------------|
| <i>Multi-Account Distribution</i> | | | |
| <u>No.</u> | <u>Vendor</u> | <u>Description</u> | <u>Amount</u> |
| 153811 | ACP Creativit LLC Green Bay, Wisconsin | Purchase of AV Equipment for Smart Classroom Upgrades. | \$212,456.00 |

Southern Illinois University
Board of Trustees
July 10, 2025

APPROVAL OF NEW PROGRAMS,
REASONABLE AND MODERATE EXTENSIONS,
APPROVAL OF OFF-CAMPUS PROGRAM LOCATIONS, AND
ACADEMIC PROGRAM ELIMINATIONS AND SUSPENSIONS
JULY 1, 2024, THROUGH JUNE 30, 2025

The submission of three tables to the Illinois Board of Higher Education on behalf of the SIU System, Southern Illinois University Carbondale and Southern Illinois University Edwardsville for approval of new programs, reasonable and moderate extensions, approval of off-campus program locations, and academic program eliminations and suspensions for the period July 1, 2024, through June 30, 2025, are attached.

Annual Listing of Changes Report

Listing of academic changes on campus for the fiscal year (July 1 - June 30) . List all changes by RME Rule. Insert more rows as needed.

University Name: Southern Illinois University Carbondale

Fiscal Year: 2025

Annual Listing of Changes*

RME Definition #3: Addition of a new organized set of courses within a major (e.g. option, concentration, specialization, or sequence) to an existing degree program.

List the program title and the new changes (E.g., option, concentration, etc.) in the program.

Anatomy and Neurobiology Concentration (in M.S. Multidisciplinary Biomedical and Biological Sciences), approved June 17, 2024 by IBHE Staff

Anatomy and Neurobiology Concentration (in Ph.D. Multidisciplinary Biomedical and Biological Sciences), approved June 17, 2024 by IBHE Staff

Biochemistry and Molecular Biology Concentration (in M.S. Multidisciplinary Biomedical and Biological Sciences), approved June 17, 2024 by IBHE Staff

Biochemistry and Molecular Biology Concentration (in Ph.D. Multidisciplinary Biomedical and Biological Sciences), approved June 17, 2024 by IBHE Staff

Biomedical Science Concentration (non-thesis) (in M.S. Multidisciplinary Biomedical and Biological Sciences), approved June 17, 2024 by IBHE Staff

Cell Biology, Immunology and Cancer Biology Concentration (in M.S. Multidisciplinary Biomedical and Biological Sciences), approved June 17, 2024 by IBHE Staff

Cell Biology, Immunology and Cancer Biology Concentration (in Ph.D. Multidisciplinary Biomedical and Biological Sciences), approved June 17, 2024 by IBHE Staff

Financial Analytics Specialization (in B.S. Finance), approved May 21, 2025 by President Dan Mahony

Medicinal Chemistry Concentration (in Ph.D. Multidisciplinary Biomedical and Biological Sciences) - moved from Ph.D. Pharmacology and Neuroscience, approved June 17, 2024 by IBHE Staff

Microbiology Concentration (in M.S. Multidisciplinary Biomedical and Biological Sciences), approved June 17, 2024 by IBHE Staff

Microbiology Concentration (in Ph.D. Multidisciplinary Biomedical and Biological Sciences), approved June 17, 2024 by IBHE Staff

Molecular and Integrative Physiology Concentration (in M.S. Multidisciplinary Biomedical and Biological Sciences), approved June 17, 2024 by IBHE Staff

Molecular and Integrative Physiology Concentration (in Ph.D. Multidisciplinary Biomedical and Biological Sciences), approved June 17, 2024 by IBHE Staff

Pharmacology and Neuroscience Concentration (in M.S. Multidisciplinary Biomedical and Biological Sciences), approved June 17, 2024 by IBHE Staff

Pharmacology and Neuroscience Concentration (in Ph.D. Multidisciplinary Biomedical and Biological Sciences), approved June 17, 2024 by IBHE Staff

Public Health Laboratory Science Concentration (in M.S. Multidisciplinary Biomedical and Biological Sciences), approved June 17, 2024 by IBHE Staff

Public Health Laboratory Science Concentration (in Ph.D. Multidisciplinary Biomedical and Biological Sciences), approved June 17, 2024 by IBHE Staff

RME Definition #4: Addition of an externally funded research or public service activity labeled as a center or institute because of grant requirements. The activity is temporary, not formally organized an has no continuous mission.

List center/institute title.

NONE

RME Definition #5: Addition of a new minor. The staff expects that the curriculum of each minor should include upper division courses.

List new minors established. These will not go into IBHE's Program Inventory.

Aircraft Dispatch Minor; approved June 2, 2025 by President Dan Mahony

Public Health Minor; approved December 6, 2024 by President Dan Mahony

Sport Administration Minor; approved December 6, 2024 by President Dan Mahony

RME Definition #6: Change in a degree title (e.g., the name of a discipline or major without changes in objectives or content such as the change from "medical terminology" to "clinical laboratory sciences").

- List all changes of program names with the old program name/level, associated CIP Code, region, and new program name.

- Change in a degree title only (e.g., the name of a discipline or major without changes in objectives or content such as the change from "medical terminology" to "clinical laboratory sciences").

| Original Degree Title and Level | New Program Name | CIP | Region |
|-------------------------------------------------------------------------------------------------|-----------------------------------------|---------|----------|
| e.g., B.S. in Biological Studies | B.S. in Biology | xx.xxxx | Southern |
| News-Editorial Specialization (in B.S. Journalism); approved 04.01.2025 by President Dan Mahony | Broadcast News-Editorial Specialization | 09.0401 | Southern |

RME Definition #7: Change in the name of an administrative (including departments), research, or public service unit.

List the unit/department's old name and then it's new name.

| Original Unit Name | New Unit Name |
|---------------------------------------------------------------------------------------------|---------------------------------------------|
| e.g., Center for Advanced Studies | Center for the Study of Advancement |
| Cooperative Wildlife Research Laboratory; approved October 21, 2024 by President Dan Mahony | Center for Wildlife Sustainability Research |

RME Definition #8: Elimination or temporary suspension of an extension degree program (indicate Phase Down , Elimination, or Temporary Suspension status and include a status update for program previously suspended temporarily).

List existing Degree, CIP, and Region. List original status and new status e.g., from "Active to Phase Down", "Phase Down to Elimination" and "Active to Temporarily Inactive Status". Include status of all programs in "temporarily suspended." ***

| Program Title/Level | CIP Code | Region | Original Status | New Status | Effective Date |
|-------------------------|----------|------------|-----------------|------------|----------------|
| e.g. B.S. in Psychology | xx.xxxx | Fox Valley | Active | Phase Down | Dec-22 |

Annual Listing of Changes Report

1 of 5

| | | | | | |
|-------------------------------------------------------------------------------------------------------------------------------------------------|---------|----------|------------|-------------|--------|
| Advanced Vehicle Systems and Diagnostics Minor; <i>approved 02.22.2022 by President Dan Mahony</i> | | Southern | Active | Phase Down | Jul-30 |
| Agribusiness Economics Concentration (in MBA); <i>approved 05.21.2021 by President Dan Mahony</i> | | Southern | Active | Phase Down | Jul-28 |
| Art Minor; <i>approved 02.21.2022 by President Dan Mahony</i> | | Southern | Active | Phase Down | Jul-30 |
| Business Economics (B.S.); <i>approved 04.26.2021 by President Dan Mahony</i> | 52.0601 | Southern | Active | Phase Down | Jul-26 |
| Career and Technical Education Specialization (in B.S. Workforce Education and Development); <i>approved 06.09.2022 by President Dan Mahony</i> | | Southern | Phase Down | Elimination | |
| Ceramics Specialization (in B.F.A.); <i>approved 02.21.2022 by President Dan Mahony</i> | | Southern | Active | Phase Down | Jul-30 |
| Civil Society, Communication and Media Practice Post-Baccalaureate Certificate; <i>approved 11.23.2020 by President Dan Mahony</i> | 09.0102 | Southern | Active | Phase Down | Jul-28 |
| Climate and Water Resources Concentration (in M.S. Geography and Environmental Resources); <i>approved 06.09.2022 by President Dan Mahony</i> | | Southern | Active | Phase Down | Jul-28 |
| Counselor Education (M.S.Ed.); <i>acknowledged/approved 06.30.2020 by IBHE staff</i> | 13.1101 | Southern | Active | Phase Down | Jul-27 |
| Didactic Program in Dietetics Specialization (in B.S. Human Nutrition and Dietetics); <i>approved 03.18.2021 by President Dan Mahony</i> | | Southern | Active | Phase Down | Jul-28 |
| Drawing Specialization (in B.F.A.); <i>approved 02.21.2022 by President Dan Mahony</i> | | Southern | Active | Phase Down | Jul-30 |
| Education Concentration Counselor Education (Ph.D.); <i>acknowledged/approved 06.17.2022 by IBHE Staff</i> | 13.1101 | Southern | Active | Phase Down | Jul-29 |
| Education Concentration Curriculum and Instruction (Ph.D.); <i>acknowledged/approved 06.17.2022 by IBHE Staff</i> | 13.0301 | Southern | Active | Phase Down | Jul-29 |
| Education Concentration Educational Administration (Ph.D.); <i>acknowledged/approved 06.17.2022 by IBHE Staff</i> | 13.0401 | Southern | Active | Phase Down | Jul-29 |
| Education Concentration Quantitative Methods (Ph.D.); <i>acknowledged/approved 06.17.2022 by IBHE Staff</i> | 45.0102 | Southern | Active | Phase Down | Jul-29 |
| Education Concentration Special Education (Ph.D.); <i>acknowledged/approved 06.17.2022 by IBHE Staff</i> | 13.1001 | Southern | Active | Phase Down | Jul-29 |
| Education Concentration Workforce Education and Development (Ph.D.); <i>acknowledged/approved 06.17.2022 by IBHE Staff</i> | 13.1320 | Southern | Active | Phase Down | Jul-29 |
| Electronic Journalism Specialization (in B.A. Radio, Television, and Digital Media); <i>approved 04.26.2021 by President Dan Mahony</i> | | Southern | Active | Phase Down | Jul-28 |
| Electronic Journalism Specialization (in B.S. Journalism); <i>approved 04.01.2025 by President Dan Mahony</i> | | Southern | Active | Eliminate | Jul-25 |
| Electronic Systems Technologies (B.S.); <i>approved 05.03.2022 by President Dan Mahony</i> | 15.0399 | Southern | Active | Phase Down | Jul-28 |
| Emergency Management Administration Specialization (B.S. in Public Safety Management); <i>approved 06.12.2023 by President Dan Mahony</i> | | Southern | Active | Phase Down | Jul-31 |
| Emergency Medical Services Specialization (in B.S. Public Safety Management); <i>approved 06.12.2023 by President Dan Mahony</i> | | Southern | Active | Phase Down | Jul-31 |
| Environmental Sustainability Concentration (in M.S. Geography and Environmental Resources); <i>approved 06.09.2022 by President Dan Mahony</i> | | Southern | Active | Phase Down | Jul-28 |
| Food and Nutrition (M.S.); <i>acknowledged/approved 05.24.2021 by IBHE staff</i> | 19.0501 | Southern | Phase Down | Elimination | Jul-28 |
| Fashion Styling Specialization (in B.S. Fashion Studies); <i>approved 04.01.2025 by President Dan Mahony</i> | | Southern | Active | Elimination | Jul-25 |
| Glass Specialization (in B.F.A.); <i>approved 02.21.2022 by President Dan Mahony</i> | | Southern | Active | Phase Down | Jul-30 |
| Global Studies Minor; <i>approved 05.03.2022 by President Dan Mahony</i> | | Southern | Active | Phase Down | Jul-30 |
| Healthcare Informatics Post-Baccalaureate Certificate; <i>approved 02.28.2025 by President Dan Mahony</i> | 51.0706 | Southern | Active | Elimination | Jul-25 |
| Human Nutrition and Dietetics Specialization (in B.S. Human Nutrition and Dietetics); <i>approved 03.18.2021 by President Dan Mahony</i> | | Southern | Active | Phase Down | Jul-28 |
| Journalism and Mass Communication Undergraduate Certificate; <i>approved 04.02.2021 by President Dan Mahony</i> | 09.0401 | Southern | Active | Phase Down | Jul-29 |
| Kinesiology (M.S.Ed.); <i>acknowledged/approved 05.24.2021 by IBHE staff</i> | 31.0505 | Southern | Phase Down | Elimination | Jul-28 |

| Learning Systems Design and Technology Concentration (in M.S.Ed. Curriculum and Instruction); <i>approved 11.09.2022 by President Dan Mahony</i> | | Southern | Active | Phase Down | Jul-28 |
|------------------------------------------------------------------------------------------------------------------------------------------------------------------------------------------------------------------------------------------------|------------------------------------------------------------------------------------------------------|----------|---------------------|-----------------------|--------|
| Magnetic Resonance Imaging (MRI) Post-Baccalaureate Certificate; <i>approved 01.04.2021 by President Dan Mahony</i> | 51.0907 | Southern | Active | Phase Down | Jul-28 |
| Mathematics (B.A.); <i>approved 04.16.2024 by President Dan Mahony</i> | 27.0101 | Southern | Temporarily Inactiv | Elimination | Jul-25 |
| Media Industries Specialization (in B.A. Radio, Television, and Digital Media); <i>approved 04.26.2021 by President Dan Mahony</i> | | Southern | Active | Phase Down | Jul-28 |
| Metalsmithing Specialization (in B.F.A.); <i>approved 02.21.2022 by President Dan Mahony</i> | | Southern | Active | Phase Down | Jul-30 |
| Mining and Mineral Resources Engineering Concentration (in Ph.D. Engineering Science); <i>approved 04.16.2024 by President Dan Mahony</i> | | Southern | Active | Phase Down | Jul-31 |
| Mining Engineering (B.S.); <i>approved 05.21.2021 by President Dan Mahony</i> | 14.2101 | Southern | Phase Down | Elimination | Jul-26 |
| Mining Engineering (M.S.); <i>approved 05.21.2021 by President Dan Mahony</i> | 14.2101 | Southern | Phase Down | Elimination | Jul-25 |
| Museum Studies Minor; <i>approved 02.22.2022 by President Dan Mahony</i> | | Southern | Active | Phase Down | Jul-26 |
| Nutrition for Wellness Specialization (in B.S. Human Nutrition and Dietetics); <i>approved 03.18.2021 by President Dan Mahony</i> | | Southern | Active | Phase Down | Jul-28 |
| Opera/Music Theater Concentration (in M of Music); <i>approved 05.30.2023 by President Dan Mahony</i> | | Southern | Active | Eliminate | Jul-25 |
| Organizational Training and Development Specialization (in B.S. Workforce Education and Development); <i>approved 06.09.2022 by President Dan Mahony</i> | | Southern | Active | Phase Down | Jul-29 |
| Painting Specialization (in B.F.A.); <i>approved 02.21.2022 by President Dan Mahony</i> | | Southern | Active | Phase Down | Jul-30 |
| Paramedicine Undergraduate Certificate; <i>approved 03.16.2021 by President Dan Mahony</i> | 43.0202 | Southern | Active | Phase Down | Jul-28 |
| Performance Studio Jazz Specialization (in B. of Music); <i>approved 03.16.2021 by President Dan Mahony</i> | | Southern | Active | Phase Down | Jul-28 |
| Photography Specialization (in B.A. Art); <i>approved 04.04.2025 by President Dan Mahony</i> | | Southern | Active | Phase Down | Jul-30 |
| Physical Education Teacher Education (B.S.) | 13.1314 | Southern | Temporarily Inactiv | Temporarily Suspended | Jun-18 |
| Piano Education Arts Concentration (in M. of Music); <i>approved 03.16.2021 by President Dan Mahony</i> | | Southern | Active | Phase Down | Jul-27 |
| Printmaking Specialization (in B.F.A.); <i>approved 02.21.2022 by President Dan Mahony</i> | | Southern | Active | Phase Down | Jul-30 |
| Production Horticulture-Science Specialization (in B.S. Horticulture); <i>approved 10.23.2023 by President Dan Mahony</i> | | Southern | Active | Phase Down | Jul-31 |
| Public Service Specialization (in B.A. Political Science); <i>approved 09.27.2021 by President Dan Mahony</i> | | Southern | Phase Down | Elimination | Jul-28 |
| Recreation Professions (M.S.Ed.); <i>acknowledged/approved05.24.2021 by IBHE staff</i> | 31.0101 | Southern | Phase Down | Elimination | Jul-28 |
| Rehabilitation Administration and Services (M.S.); <i>approved 04.26.2021 by President Dan Mahony</i> | 51.0704 | Southern | Phase Down | Elimination | Jul-26 |
| Rehabilitation Counseling (M.S.); <i>acknowledged/approved 06.30.2020 by IBHE staff</i> | 51.2310 | Southern | Phase Down | Elimination | Jul-27 |
| Respiratory Therapy Specialization (in B.S. Healthcare Management); <i>approved 04.11.2024 by President Dan Mahony</i> | | Southern | Active | Elimination | Jul-25 |
| Sculpture Specialization (in B.F.A.); <i>approved 02.21.2022 by President Dan Mahony</i> | | Southern | Active | Phase Down | Jul-30 |
| Special Education (M.S.Ed.) | 13.1001 | Southern | Temporarily Inactiv | Temporarily Suspended | |
| Unmanned Aircraft Systems Minor, <i>approved 06.02.2025 by President Dan Mahony</i> | | Southern | Active | Elimination | Jul-25 |
| RME Definition #9: Reorganization, restructuring, consolidation, elimination, and other changes of existing administrative (including departments), research, or public services units that does not result in an increase in subunits. | | | | | |
| <i>Please label the status for each unit/department and include effective date.</i> | | | | | |
| Original Unit Name | New Unit Name | | Status | Effective Date | |
| | Department of Physician Associate Medicine; <i>approved October 21, 2024 by President Dan Mahony</i> | | | Summer 2026 | |
| Physician Assistant Program (MSPA) Department of Family & Community Medicine; <i>approved October 21, 2024 by President Dan Mahony</i> | Physician Assistant Program (MSPA) Department of Physician Associate Medicine | | | Summer 2026 | |

| | | | | | | | |
|---------------------------------------------------------------------------------------------------------------------------------------------------------------------------------------------------------------------------------------------------------------------------------------------------------------------------|--|-------------------------------------------------|--------------------------------------------|-------------------------------------------------------------------------------------|----------------------------------------------------------------------------------------------------------------------------------------|---------------|----------|
| Doctor of Medical Science Program (DMSc) Department of Family & Community Medicine; approved October 21, 2024 by President Dan Mahony | | | | Doctor of Medical Science Program (DMSc) Department of Physician Associate Medicine | | Summer 2026 | |
| RME Definition #10: Creation of a certificate program in a field in which there is a previously approved degree program (e.g., undergraduate certificates at Levels 1 and 2 from a prior approved bachelor's program; post-baccalaureate certificates at Level 5 from a prior approved master's program). | | | | | | | |
| List new certificates established, CIP code (if appropriate), and corresponding program title/level it was based on. | | | | | | | |
| Certificate Title/Level | | CIP Code | | Program Title/Level | | CIP Code | |
| NONE | | | | | | | |
| RME Definition #11: Creation of a joint degree program from two previously approved programs. | | | | | | | |
| List new program title/level and CIP Code and the parent program titles, levels, and CIP Codes. | | | | | | | |
| New Program Title with Level | | CIP Code | Program 1 Title | Program 1 CIP | Program 2 Title | Program 2 CIP | |
| e.g., B.S. in Comp Sci +Bio | | xx.xxxx | B.S. in Comp Sci | xx.xxxx | B.S. in Biology | xx.xxxx | |
| Accelerated Master of Accountancy; approved March 14, 2025 by President Dan Mahony | | 52.1399 | MAcc Accountancy | 52.1399 | B.S. in Accounting to Macc Accountancy Accelerated | 52.1399 | |
| Accelerated M.S. Public Safety Administration; approved May 1, 2025 by President Dan Mahony | | 43.0202 | M.S. in Public Safety Administration | 43.0202 | B.S. in Public Safety Management to M.S. Public Safety Administration Accelerated | 43.0202 | |
| Accelerated M.S. Multidisciplinary Biomedical and Biological Sciences with a Biomedical Science Concentration (non-thesis) or Molecular and Integrative Physiology Concentration; approved May 22, 2025 by President Dan Mahony | | 26.0102 | M.S. in Biomedical and Biological Sciences | 26.0102 | B.S. in Biological Science or Physiology to M.S. Multidisciplinary Biomedical and Biological Sciences Accelerated (add concentrations) | 26.0102 | |
| RME** | | | | | | | |
| RME Definition #12: Reactivation of a temporarily suspended program. | | | | | | | |
| List the information of the program (title, level, CIP, Region) to reactivate it in the Program Inventory. | | | | | | | |
| Program Title | | Program CIP | | | Program Region | | |
| NONE | | | | | | | |
| RME Definition #13: Creation of a new formally organized research or public service unit that has a temporary mission of up to five years. (Criteria for continuation and a date for submission and request for permanent approval should accompany the RME). | | | | | | | |
| List the new unit title, region, and effective date. | | | | | | | |
| Unit Title | | Region | | | | | |
| NONE | | | | | | | |
| RME Definition #14: Creation of a certificate program in a field or at a level in which there is not a previously approved degree program at that level or a higher level. | | | | | | | |
| Program Title | | Program Level | | CIP Code | | Region | |
| NONE | | | | | | | |
| RME Definition #15: Creation of a new program that results from the reorganization or restructuring of the curricular elements of an existing program that have over time evolved into separate and distinct programs (e.g., split into two or more autonomous programs, or options have evolved into separate programs). | | | | | | | |
| Title of Original Program with Level | | CIP Code | | Title of New Program with Level | | CIP Code | Region |
| e.g., B.S. Biological Psychology | | xx.xxxx | | | | | |
| B.A. University Studies; approved April 14, 2025 by IBHE Staff | | 24.0101 | | B.A. Interdisciplinary Studies | | 24.0101 | Southern |
| M.S. Molecular Biology, Microbiology, and Biochemistry, M.S. Molecular, Cellular and Systemic Physiology, M.S. Pharmacology and Neuroscience, M.A. Pharmacology and Neuroscience, M.S. Biomedical Science; acknowledged/approved June 17, 2024 by IBHE Staff | | 26.0205, 26.0902, 26.1001, 26.1001, and 26.0102 | | M.S. Multidisciplinary Biomedical and Biological Sciences | | 26.0102 | Southern |
| Ph.D. Molecular Biology, Microbiology, and Biochemistry, Ph.D. Pharmacology and Neuroscience; acknowledged/approved June 17, 2024 by IBHE Staff | | 26.0205 and 26.1001 | | Ph.D. Multidisciplinary Biomedical and Biological Sciences | | 26.0102 | Southern |
| Civil and Environmental Engineering Concentration; approved October 22, 2024 by IBHE Staff | | 14.0101 | | Ph.D. Civil and Environmental Engineering | | 14.0899 | Southern |
| RME Definition #16: Reclassification (change of CIP) of a program resulting from incremental changes or consolidation of two or more degree programs into a single program. | | | | | | | |
| Program Degree Title and Level | | Original CIP Code | | | New CIP Code | | Region |
| NONE | | | | | | | |
| RME Definition #17: Changes in degree designation at the same level (e.g., BA to BFA, BBA to BS, DBA to PhD). | | | | | | | |

| Original Degree Program Title and Designation | Original CIP Code | New Degree Title and Designation | Region |
|-------------------------------------------------------------------------------------------------------------------------------------------------------------------------------------------------------------------------------------------|-------------------|----------------------------------|-------------------|
| NONE | | | |
| RME Definition #18: Creation of an out-of-region degree program. | | | |
| Program Title and Level | CIP Code | Home Region | New Region |
| Public Safety Management (B.S.); <i>approved April 7, 2024 by IBHE Staff</i> | 43.0202 | Southern | Fox Valley Region |
| Board Action | | | |
| RME Definition #19: Creation of a degree program (excluding certificate programs) in a new field or at a new level (based on CIP or IPEDS definitions). | | | |
| Master of Professional Accountancy (52.1399); <i>approved August 21, 2024 by IBHE Board</i> | | | |
| RME Definition #20: Creation of new units of instruction, research, or public service that involve a change or expansion in mission, including programs, departments, colleges, centers or institutes, or other formally organized units. | | | |
| NONE | | | |
| RME Definition #21: Creation of a new campus. | | | |
| NONE | | | |
| *Annual Listings are submitted by the institution and acknowledged by IBHE. There is no approval required. | | | |
| **Reasonable and Moderate Extension - these are submitted and require IBHE staff approval. | | | |
| ***See Section 1050.50 (c)(2) of the Administrative Rules for rules regarding Programs Placed in Temporary Suspension Status | | | |

Annual Listing of Changes Report

Listing of academic changes on campus for the fiscal year (July 1 - June 30) . List all changes by RME Rule. Insert more rows as needed.

University Name: Southern Illinois University Edwardsville

Fiscal Year: 2025

Annual Listing of Changes*

RME Definition #3: Addition of a new organized set of courses within a major (e.g. option, concentration, specialization, or sequence) to an existing degree program.

Master of Music

CIP Code 50.0901

Addition of Instrumental Conducting Specialization, approved November 4, 2024 by President Dan Mahony

Master of Music

CIP Code 50.0901

Addition of Choral Conducting Specialization, approved November 4, 2024 by President Dan Mahony

Master of Music

CIP Code 50.0901

Addition of Jazz Specialization, approved November 4, 2024 by President Dan Mahony

Doctor of Pharmacy

CIP Code 51.2001

Addition of Psychiatric Specialization (Doctor of Pharmacy), approved November 18, 2024 by President Dan Mahony

Master of Arts in Applied Communication Studies

CIP Code 09.0101

Combining three existing specializations (Interpersonal Communication Specialization, Health Communication Specialization, and Corporate and Organizational Communication Specialization) into one new Generalist Applied Communication Specialization in the MA in Applied Communication Studies, approved February 18, 2025 by President Dan Mahony

RME Definition #4: Addition of an externally funded research or public service activity labeled as a center or institute because of grant requirements. The activity is temporary, not formally organized an has no continuous mission.

List center/institute title.

NONE

RME Definition #5: Addition of a new minor. The staff expects that the curriculum of each minor should include upper division courses.

Addition of Surveying and Geomatics minor to the Department of Construction within the SIUE School of Engineering; approved April 1, 2025 by President Dan Mahony

RME Definition #6: Change in a degree title (e.g., the name of a discipline or major without changes in objectives or content such as the change from "medical terminology" to "clinical laboratory sciences").

- List all changes of program names with the old program name/level, associated CIP Code, region, and new program name.

- Change in a degree title only (e.g., the name of a discipline or major without changes in objectives or content such as the change from "medical terminology" to "clinical laboratory sciences").

Original Degree Title and Level

New Program Name

CIP

Region

e.g., B.S. in Biological Studies

B.S. in Biology

xx.xxxx

Southern

NONE

RME Definition #7: Change in the name of an administrative (including departments), research, or public service unit.

List the unit/department's old name and then it's new name.

Original Unit Name

New Unit Name

e.g., Center for Advanced Studies

Center for the Study of Advancement

NONE

RME Definition #8: Elimination or temporary suspension of an extension degree program (indicate Phase Down , Elimination, or Temporary Suspension status and include a status update for program previously suspended temporarily).

List existing Degree, CIP, and Region. List original status and new status e.g., from "Active to Phase Down", "Phase Down to Elimination" and "Active to Temporarily Inactive Status". Include status of all programs in "temporarily suspended." ***

Program Title/Level

CIP Code

Region

Original Status

New Status

Effective Date

MSED in Special Education, approved April 28, 2025 by President Dan Mahony

13.1001

Southwestern

Phase Down

Elimination

28-Apr-25

Master's of Fine Arts in Creative Writing, approved April 23, 2025 by President Dan Mahony

23.1302

Southwestern

Phase Down

Elimination

23-Apr-25

Astronomy Specialization in the B.S. in Physics, approved April 23, 2025 by President Dan Mahony

40.0801

Southwestern

Active

Elimination

23-Apr-25

Biomedical Physics Specialization in the B.S. in Physics, approved April 23, 2025 by President Dan Mahony

40.0801

Southwestern

Active

Elimination

23-Apr-25

Photonics and Laser Physics Specialization in the B.S. in Physics, approved April 23, 2025 by President Dan Mahony

40.0801

Southwestern

Active

Elimination

23-Apr-25

Manufacturing Engineering Specialization in the B.S. in Industrial Engineering, approved May 19, 2025 by President Dan Mahony

14.3501

Southwestern

Active

Elimination

19-May-25

Post-Baccalaureate Certificate in Teaching English as a Second Language, approved May 19, 2025 by President Dan Mahony

13.1401

Southwestern

Active

Elimination

19-May-25

PSM in Environmental Science Management, approved April 28, 2025 by President Dan Mahony

3.0199

Southwestern

Active

Elimination

28-Apr-25

RME Definition #9: Reorganization, restructuring, consolidation, elimination, and other changes of existing administrative (including departments), research, or public services units that does not result in an increase in subunits.

Please label the status for each unit/department and include effective date.

Original Unit Name

New Unit Name

Status

Effective Date

(Restructure/Split) Applied Health Department in the School of Education, Health, and Human Behavior, approved December 13, 2024 by President Dan Mahony

Note-the split was determined by IBHE staff to fall within RME definition #9 because it was budget neutral, largely followed the existing structure, and didn't result in the hiring of new department chairs.

Department of Public Health and Speech-Language Pathology & Audiology

7/1/2025

(Restructure/Split) Applied Health Department in the School of Education, Health, and Human Behavior, approved December 13, 2024 by President Dan Mahony

""

Department of Exercise, Sport, and Nutrition Sciences

7/1/2025

RME Definition #10: Creation of a certificate program in a field in which there is a previously approved degree program (e.g., undergraduate certificates at Levels 1 and 2 from a prior approved bachelor's program; post-baccalaureate certificates at Level 5 from a prior approved master's program.

Annual Listing of Changes Report

1 of 3

List new certificates established, CIP code (if appropriate), and corresponding program title/level it was based on.

| Certificate Title/Level | CIP Code | Program Title/Level | CIP Code |
|-------------------------|----------|---------------------|----------|
| NONE | | | |

RME Definition #11: Creation of a joint degree program from two previously approved programs.

List new program title/level and CIP Code and the parent program titles, levels, and CIP Codes.

| New Program Title with Level | CIP Code | Program 1 Title | Program 1 CIP | Program 2 Title | Program 2 CIP |
|------------------------------------------------------------------------------------------------------------------------------------------------------------------------------------------------------------|----------|------------------------------|---------------|-------------------------------------------------------------|---------------|
| Accelerated BS/MS leading to a Bachelor of Science in Mathematical Studies and Master of Science in Mathematics - Computational and Applied Mathematics, approved October 30, 2024 by President Dan Mahony | 27.0101 | B.S. in Mathematical Studies | | M.S. in Mathematics - Computational and Applied Mathematics | 27.0101 |

RME**

RME Definition #12: Reactivation of a temporarily suspended program.

List the information of the program (title, level, CIP, Region) to reactivate it in the Program Inventory.

| Program Title | Program CIP | Program Region |
|---------------|-------------|----------------|
| NONE | | |

RME Definition #13: Creation of a new formally organized research or public service unit that has a temporary mission of up to five years. (Criteria for continuation and a date for submission and request for permanent approval should accompany the RME).

List the new unit title, region, and effective date.

| Unit Title | Region |
|------------|--------|
| NONE | |

RME Definition #14: Creation of a certificate program in a field or at a level in which there is not a previously approved degree program at that level or a higher level.

| Program Title | Program Level | CIP Code | Region |
|-----------------------------------------------------------------------------------------------|------------------------|----------|--------------|
| Post-Master's Certificate in Periodontics (Level 8), approved February 20, 2025 by IBHE Staff | Post-Master's/ Level 8 | 51.0510 | Southwestern |

RME Definition #15: Creation of a new program that results from the reorganization or restructuring of the curricular elements of an existing program that have over time evolved into separate and distinct programs (e.g., split into two or more autonomous programs, or options have evolved into separate programs).

| Title of Original Program with Level | CIP Code | Title of New Program with Level | CIP Code | Region |
|--------------------------------------|----------|---------------------------------|----------|--------|
| e.g., B.S. Biological Psychology | xx.xxxx | | | |
| NONE | | | | |

RME Definition #16: Reclassification (change of CIP) of a program resulting from incremental changes or consolidation of two or more degree programs into a single program.

| Program Degree Title and Level | Original CIP Code | New CIP Code | Region |
|---------------------------------------------------------------------------|-------------------|--------------|--------------|
| BS in Cybersecurity Engineering, approved February 18, 2025 by IBHE Staff | 14.0999 | 11.1003 | Southwestern |

RME Definition #17: Changes in degree designation at the same level (e.g., BA to BFA, BBA to BS, DBA to PhD).

| Original Degree Program Title and Designation | Original CIP Code | New Degree Title and Designation | Region |
|-----------------------------------------------|-------------------|----------------------------------|--------|
| NONE | | | |

RME Definition #18: Creation of an out-of-region degree program.

| Program Title and Level | CIP Code | Home Region | New Region |
|-------------------------|----------|-------------|------------|
| NONE | | | |

Board Action

RME Definition #19: Creation of a degree program (excluding certificate programs) in a new field or at a new level (based on CIP or IPEDS definitions).

NONE

RME Definition #20: Creation of new units of instruction, research, or public service that involve a change or expansion in mission, including programs, departments, colleges, centers or institutes, or other formally organized units.

NONE

RME Definition #21: Creation of a new campus.

NONE

*Annual Listings are submitted by the institution and acknowledged by IBHE. There is no approval required.

**Reasonable and Moderate Extension - these are submitted and require IBHE staff approval.

***See Section 1050.50 (c)(2) of the Administrative Rules for rules regarding Programs Placed in Temporary Suspension Status

Southern Illinois University
Board of Trustees
July 11, 2025

CHANGES IN FACULTY-ADMINISTRATIVE PAYROLL – SIUC

The following changes in faculty-administrative payroll are submitted to the Board of Trustees for ratification in accordance with the Board Policy on Personnel Approval (2 Policies of the Board B). Additional detailed information is available from the Office of the Chancellor. Where appropriate, salary is reported on a monthly basis and on either an academic year (AY) or fiscal year (FY) basis.

- A. Initial Appointments of Faculty to Tenured and Tenure Track and Initial Appointments and Promotions of Professional Staff (If the person previously had a University appointment, it is so noted. Otherwise, the person is a new University employee.)

| | <u>Name</u> | <u>Rank/Title</u> | <u>Department</u> | <u>Effective Date</u> | <u>Salary</u> |
|----|----------------------|-------------------------------------------------|-------------------------------------------------------|-----------------------|-----------------------------------------------------------------------------------------|
| 1. | Ai, Weining | Assistant Professor | School of Anthropology, Political Science & Sociology | 08/12/2025 | \$8,556.00 /MO \$77,004.00 /AY |
| 2. | Baril, Stephanie Ann | Student Success Coach | SIU Online and Extended Campus | 04/01/2025 | \$4,500.00 /MO \$54,000.00 /FY |
| 3. | Bluemel, Brody | Director 100%/ Professor 0% | School of Languages & Linguistics | 08/04/2025 | \$10,834.00 /MO \$130,008.00 /FY |
| 4. | Boyer, Valerie | Director 100%/ (Previously Interim Director) | School of Human Sciences | 07/01/2025 | \$11,334.00 /MO \$136,008.00 /FY (Previously \$11,334.00 /MO \$136,008.00 /FY) |
| 5. | Douglas, Stephen D | Assistant Professor | School of Justice and Public Safety | 08/16/2025 | \$8,000.00 /MO \$72,000.00 /AY |
| 6. | Eads, Emerson | Assistant Professor | School of Music | 08/12/2025 | \$7,223.00 /MO \$65,007.00 /AY |
| 7. | Ghosh, Saptarshi | Post-Doctoral Fellow | School of Biological Science | 02/17/2025 | \$3,052.00 /MO \$36,624.00 /FY |

| | | | | | |
|-----|----------------------|--------------------------------------------------------------------|-----------------------------------|------------|----------------------------------------------------------------------------------------|
| 8. | Greenwalt, Dustin | Assistant Professor | School of Communication Studies | 08/12/2025 | \$8,334.00 /MO \$75,006.00 /AY |
| 9. | Hunter, Larry | Interim Executive Director (Previously Director of Development) | Broadcasting Services | 04/16/2025 | \$9,584.00 /MO \$115,008.00 /FY (Previously \$7,148.00 /MO \$85,776.00 /FY) |
| 10. | Little, Kimberly | Director (Student Services) (Previously Interim Assistant Dean) | College of Business and Analytics | 04/01/2025 | \$5,826.00 /MO \$69,912.00 /FY (Previously \$5,358.00 /MO \$64,296.00 /FY) |
| 11. | Moore, Eriq M | Assistant Coach | Intercollegiate Athletics | 04/07/2025 | \$5,416.67 /MO \$65,000.04 /FY |
| 12. | Price, Marco J | Student Success Coach | SIU Online and Extended Campus | 05/01/2025 | \$4,762.00 /MO \$57,144.00 /FY |
| 13. | Reichert, Thomas | Assistant Professor | Simmons Law School | 08/12/2025 | \$10,000.00 /MO \$90,000.00 /AY |
| 14. | Rice, Lisa D | Academic Advisor I | College of Liberal Arts | 03/19/2025 | \$3,084.00 /MO \$37,008.00 /FY |
| 15. | Richards, Dawn C | Director (Previously Associate Professor) | School of Human Sciences | 07/01/2025 | \$11,250.00 /MO \$135,000.00 /FY (Previously \$10,051.00 /MO \$90,459.00 /AY) |
| 16. | Vlahovich, Sergio | Student Success Coach | SIU Online and Extended Campus | 05/01/2025 | \$4,500.00 /MO \$54,000.00 /FY |
| 17. | Walters, William H | Dean 100%/ Professor 0% | Library Affairs | 07/01/2025 | \$15,417.00 /MO \$185,004.00 /FY |
| 18. | Wolek, Kristin | Assistant Professor | Simmons Law School | 07/14/2025 | \$6,668.00 /MO \$80,016.00 /FY |
| 19. | Yates, Christopher E | Assistant Coach | Intercollegiate Athletics | 05/12/2025 | \$3,750.00 /MO \$45,000.00 /FY |

B. Grant of Leave With Pay:

| | <u>Name</u> | <u>Type of Leave</u> | <u>Department/School</u> | <u>% of Leave</u> | <u>Date</u> |
|----|---------------------------------------------------------------------------------------------------------------------------------------------|----------------------|----------------------------------|-------------------|--------------------------------|
| 1. | Weeks, Theodore | Sabbatical | School of History and Philosophy | 100% | January 1, 2026 – May 15, 2026 |
| | Research project “The Beginnings of Polish Radio, 1923-1939: Politics, Society, Culture.” This will lead to a monograph and part of a book. | | | | |

C. Grant of Academic Tenure:

| | <u>Name</u> | <u>Title on Effective Date of Tenure</u> | <u>Department/School</u> | <u>Effective Date</u> |
|----|-------------------|------------------------------------------|-----------------------------------|-----------------------|
| 1. | Bluemel, Brody | Professor | School of Languages & Linguistics | 08/04/2025 |
| 2. | Walters, Willilam | Professor | Library Affairs | 07/01/2025 |

D. Promotions of Tenured and Tenure Track Faculty:

CHANGES IN FACULTY-ADMINISTRATIVE PAYROLL – SIU SCHOOL OF MEDICINE

The following changes in faculty-administrative payroll at the School of Medicine/Springfield campus are submitted to the Board of Trustees for ratification in accordance with the Board Policy on Personnel Approval (2 Policies of the Board B). Additional detailed information is on file in the Office of the Dean and Provost. Where appropriate, salary is reported on a monthly basis and on either an academic year (AY) or fiscal year (FY) basis.

A. Initial Appointments of Faculty to Tenured and Tenure Track and Initial Appointments and Promotions of Professional Staff (If the person previously had a University appointment, it is so noted. Otherwise, the person is a new University employee.)

| | <u>Name</u> | <u>Rank/Title</u> | <u>Department</u> | <u>Effective Date</u> | <u>Salary</u> |
|---|-------------------|--------------------------------------------------------------|------------------------------------|-----------------------|-----------------------------------|
| 1 | Adams, Kelsie | Certified Nurse Practitioner | Pediatrics | 09/08/2025 | \$11,083.34/MO \$133,000.08/FY |
| 2 | Baker, Cynthia | Executive Director of the Behavioral Health Workforce Center | Psychiatry | 05/05/2025 | \$14,500.00/MO \$174,000.00/FY |
| 3 | Branham, Hannah | Genetics Counseling Assistant | Pediatrics | 04/21/2025 | \$5,608.25/MO \$67,299.00/FY |
| 4 | Brown, Alyssa | Certified Nurse Practitioner | Pediatrics | 07/01/2025 | \$9,583.34/MO \$115,000.08/FY |
| 5 | Bryant, Mercedes | Clinical Research Specialist | Center for Clinical Research | 06/02/2025 | \$3,657.26/MO \$43,887.12/FY |
| 6 | Ferrill, Megan | Physician Assistant - Certified | Family and Community Medicine/CHAW | 07/07/2025 | \$9,896.00/MO \$118,752.00/FY |
| 7 | Greenwood, Andrea | Neonatal Nurse Practitioner | Pediatrics | 09/08/2025 | \$11,083.34/MO \$133,000.08/FY |
| 8 | Hawkins, Dani | Deputy Chief Compliance Officer | Office of Compliance and Ethics | 06/16/2025 | \$13,333.34/MO \$160,000.08/FY |

| | | | | | |
|----|-------------------|--------------------------------------|--------------------------------------------|------------|-----------------------------------------------------------|
| 9 | Houston, Sheridan | Clinical Research Specialist | Center for Clinical Research | 3/24/2025 | \$3,657.33/MO \$43,887.96/FY |
| 10 | Jesu Raj, Joe | Researcher V | Surgery | 04/21/2025 | \$4,333.34/MO \$52,000.08/FY |
| 11 | Lawton, Hilary | Licensed Clinical Social Worker | Internal Medicine/FQHC | 06/02/2025 | \$5,281.25/MO \$63,375.00/FY |
| 12 | Lux, Kristin | Pharmacist | Office of Correctional Medicine | 06/16/2025 | \$10,416.67/MO \$125,000.04/FY |
| 13 | Mallick, Sarah | Compliance Specialist | Office of Compliance and Ethics | 03/24/2025 | \$6,250.00/MO \$75,000.00/FY |
| 14 | Patterson, Blair | Certified Nurse Practitioner | FQHC/Express Care | 04/07/2025 | \$13,334.00/MO \$160,008.00/FY |
| 15 | Roth, Jessica | Licensed Clinical Social Worker | Family and Community Medicine/ Springfield | 06/02/2025 | \$6,094.00/MO \$73,128.00/FY |
| 16 | Sandhu, Morgan | Certified Nurse Practitioner 50% FTE | Family and Community Medicine/ Quincy | 06/16/2025 | \$11,083.34/MO (full time) \$133,000.08/FY (full time) |
| 17 | Schwab, Anita | Certified Nurse Practitioner | Family and Community Medicine/ CHAAW | 06/16/2025 | \$10,635.75/MO \$127,629.00/FY |
| 18 | Shiplett, Barbara | Adjunct Assistant Instructor | Education and Curriculum | 06/02/2025 | \$4,472.60/MO \$53,671.20/FY |
| 19 | Wendell, Melissa | Certified Nurse Practitioner | Obstetrics and Gynecology | 05/19/2025 | \$ 9,572.50/MO \$114,870.00/FY |

B. Leave of Absence with Pay:

None

Grant of Academic Tenure and Promotion:

C. Promotions of Tenured and Tenure Track Faculty:

D. Promotions of Non-Tenure Track Faculty:

Southern Illinois University
Board of Trustees
JULY 10, 2025

CHANGES IN FACULTY-ADMINISTRATIVE PAYROLL – SIUE

The following changes in faculty-administrative payroll are submitted to the Board of Trustees for ratification in accordance with the Board Policy on Personnel Approval (2 Policies of the Board B). Additional detailed information is on file in the Office of the Chancellor. Where appropriate, salary is reported on a monthly basis and on either an academic year (AY) or fiscal year (FY) basis.

A. Initial Appointments of Faculty to Tenure and Tenure Track and Initial Appointments and Promotions of Professional Staff (If the person previously had a University appointment, it is so noted. Otherwise, the person is a new University employee.)

| | <u>Name</u> | <u>Rank/Title</u> | <u>Department</u> | <u>Effective Date</u> | <u>Salary</u> |
|----|-------------------------|-----------------------------------------------------------|---------------------------|-----------------------|------------------------------------------------------------------------------------|
| 1. | Feigl, Joe | Associate Director (previously Senior Researcher) | Institutional Research | 5/01/2025 | \$6,784.26/mo \$81,411.12 FY (previously \$5,395.64/mo \$64,747.60 FY) |
| 2. | Funk, Jennifer | Researcher | Institutional Research | 4/14/2025 | \$4,500.00/mo \$54,000.00/FY |
| 3. | Hamil, Mike P. | Director (previously Assistant Coordinator of Parking) | Parking Services | 5/1/2025 | \$7,083.32/mo 84,999.84/FY (previously \$4,300.00/mo \$51,600.00/FY) |
| 4. | Kloostra, Patricia A. | Director (previously Assistant Director) | Financial Affairs | 4/10/2025 | \$10,021.66/mo \$120,259.92/FY (previously \$9,454.42/mo \$113,453.04/FY) |
| 5. | McKenzie, Madalynn | Academic Advisor I | School of Engineering | 4/1/2025 | \$3,541.66/mo \$42,499.92 FY |
| 6. | Murthy, Gargi Srinivasa | Associate Professor | School of Dental Medicine | 5/1/2025 | \$12,083.34/mo \$145,000.08/FY |

B. Leaves of Absence With Pay –

None to Report

C. Awards of Tenure-

None to Report

D. Awards of Promotion-

None to Report

Southern Illinois University
Board of Trustees
July 10, 2025

APPROVAL OF SALARY AND APPOINTMENT:
EXECUTIVE DIRECTOR OF AUDIT,
SOUTHERN ILLINOIS UNIVERSITY SYSTEM

Summary

This matter presents for approval the salary and appointment of the Executive Director of Audit for the Southern Illinois University System.

Rationale for Adoption

This request seeks approval for the appointment of Ms. Evonne Thompson as the Executive Director of Audit for the Southern Illinois University System.

Ms. Thompson served as Assistant Director of Compliance, Internal Audit, and Enterprise Risk Management at the University of Chicago from July 2022 until recently. She supervised management of the university's internal audit function, risk-based assessment process and risk-assessed audit plan. She managed execution and presentation of the university's annual internal audit plan, worked closely with administrative leadership to advance the university's internal audit, compliance, internal control processes and enterprise risk management (ERM), and developed annual goals and workplan for the internal audit, compliance, and ERM programs and reported progress to senior leadership.

Previously, Ms. Thompson held senior internal audit and risk consulting roles at Charles Schwab, KPMG, and PwC. With over 16 years of experience in the field of internal audit and ERM she has a proven track record in partnering with boards, senior leadership, and management to improve internal audit quality within organizations.

Ms. Thompson is a Certified Public Accountant and earned an MBA in Entrepreneurship from Regent University, along with a Doctor of Ministry and Master's in Practical Theology. She holds a Bachelor of Science in Accounting from Butler University. Her professional affiliations include the Institute of Internal Auditors, where she held leadership roles, and she has been active in professional development networks.

Constituency Involvement

A university system-wide committee conducted a national search, resulting in a strong candidate pool. The committee identified eight candidates that were narrowed down to five finalists. The finalists were interviewed by the President and the President's senior leadership team. The President received input from the system-wide search committee and his senior leadership team in making this recommendation.

Resolution

BE IT RESOLVED, By the Board of Trustees of Southern Illinois University in regular meeting assembled, That: upon recommendation of the President, Ms. Evonne Thompson is appointed to the position of Executive Director of Audit for the SIU System beginning July 1, 2025, with an annual salary of \$174,000.00 and will receive a one-time relocation stipend in the amount of \$15,000.

BE IT FURTHER RESOLVED, That the President is hereby authorized and shall take all action as may be necessary in the execution of this resolution.

Southern Illinois University
Board of Trustees
July 10, 2025

APPROVAL OF PURCHASE:
BEVERAGE, SNACKS, AND VENDING SERVICES, SIUC

Summary

This matter seeks approval for a ten-year contract for the procurement of beverages and snack products for both resale and internal use. The contract will support vending services, bulk purchases for university departments, and resale within Intercollegiate Athletics, the Student Center, University Housing and Residence Life, as well as for campus-wide events and services.

Rationale for Adoption

This matter seeks to award a contract to Pepsi MidAmerica beginning August 1, 2025 at an estimated total cost of \$2,633,000 over a ten-year contract term. Bids from vendors to provide vending, beverage, and snack items were received in accordance with the Illinois Procurement Code and the University procurement policies. The contract will be funded by the sale of products in the Student Center, Athletics, and vending, along with student dining plans in University Housing and from non-appropriated accounts. The actual cost is dependent on the amount of product sold to customers.

This matter is recommended for adoption by the Chancellor and Vice Chancellor for Student Affairs, SIUC.

Resolution

BE IT RESOLVED, By the Board of Trustees of Southern Illinois University in regular meeting assembled, that:

(1) The purchase agreement for vending services, beverages and snack products for resale and internal use campus wide on the SIUC campus be and is hereby awarded to Pepsi MidAmerica, Marion, Illinois, in an amount not to exceed \$2,633,000 over the ten-year contract term.

(2) Funding for the purchases will come from Intercollegiate Athletics, the Student Center, student dining plans within University Housing, and non-appropriated accounts.

(3) The President of Southern Illinois University be and is hereby authorized to take whatever action may be required in the execution of this resolution in accordance with established policies and procedures.

Southern Illinois University
Board of Trustees
July 10, 2025

APPROVAL OF PURCHASE: TECHNICAL SERVICES FOR
CENTER FOR WORKFORCE DEVELOPMENT, SCHOOL OF EDUCATION, SIUC

Summary

This matter seeks approval for the purchase of technical services to support the Illinois workNet portal system (<https://www.illinoisworknet.com>), case management systems, and other web projects between September 24, 2025 and September 23, 2035.

Rationale for Adoption

A Request for Proposal was issued to solicit bids for these services. MSFW, Inc. was the successful respondent. This contract is needed to continue work on an existing 5-year, \$21 million Intergovernmental Agreement between the Department of Commerce and Economic Opportunity (DCEO) and SIU Board of Trustees, as well as other grant-funded projects funded by DCEO, the Department of Human Services, the United States Chamber of Commerce Foundation, and others.

Specifically, the technical services are necessary so the university's Center for Workforce Development (CWD) can assist the state by providing support in the delivery of certain workforce development programs and upgrading the existing Illinois workNet (IwN) system by providing support in reporting, performance management and achieving goals in a variety of essential programs that meet the federal and state government plans for Illinois.

To fulfill these responsibilities, MSFW, Inc. was selected as the vendor who could continue to partner with SIU Carbondale in meeting the requirements of the state initiatives. The award will be for an initial two-year period, with four, two-year renewal options. The total cost for this agreement is \$26,239,350.

The Chancellor and the Vice Chancellor for Administration and Finance, SIUC, have recommended this matter to the President.

Resolution

BE IT RESOLVED, By the Board of Trustees of Southern Illinois University in regular meeting assembled, That:

(1) The purchase of services from MSFW, Inc., of Springfield, Illinois, will allow CWD to fulfill workforce development agreements with the Illinois Department of Commerce and Economic Opportunity and the Department of Human Services, and other agencies, and be and is hereby approved for up to \$26,239,350.

(2) Funding for this purchase will come from non-appropriated funds from the Illinois Department of Commerce and Economic Opportunity funded by the state and federal government for such purposes, the Illinois Department of Human Services, the United States Chamber of Commerce Foundation, Iowa Workforce Development, and others.

(3) The President of Southern Illinois University be and is hereby authorized to take whatever action may be required in the execution of this resolution in accordance with established policies and procedures.

Southern Illinois University
Board of Trustees
July 10, 2025

APPROVAL OF PURCHASE: SOFTWARE LICENSE CONTRACT,
SOUTHERN ILLINOIS UNIVERSITY SYSTEM

Summary

This matter seeks approval for the purchase of a combined software licensing agreement with SHI International Corporation for Coursedog Curriculum Management serving the needs of Southern Illinois University Carbondale and Edwardsville campuses.

Rationale for Adoption

In Fall 2023, the Registrar's and Provost's Offices at Southern Illinois University Carbondale (SIUC) and Southern Illinois University Edwardsville (SIUE) jointly convened a system-wide committee to evaluate potential software solutions for a comprehensive catalog and curriculum management platform.

The committee was composed of representatives from Information Technology, faculty, the Registrar's Offices, Provost's Offices, academic advisement, and the Graduate School from both campuses. The group participated in a series of detailed demonstrations from three leading vendors in the field.

Following the demonstrations, committee members were surveyed to assess the functionality, user experience, integration capabilities, and overall fit of each platform with institutional needs. Based on the collective evaluation and feedback, Coursedog was identified as the preferred vendor. The committee determined that Coursedog offered the most comprehensive and adaptable solution to support the current and future catalog and curriculum management needs of both SIUC and SIUE.

Coursedog, Inc., specializes in software for managing a wide range of academic operations associated with student success, course catalogs, syllabus management, assessment, and scheduling. The solution is an industry frontrunner and has been adopted by many institutions to address and streamline the complexities of curriculum management. In addition, this integrated suite of tools will be used to transform and automate efforts within the SIU System. This software licensing agreement negotiation was a collaboration between Carbondale and Edwardsville campuses to ensure a cohesive approach to curriculum management.

In establishing this license, SIU System increases efficiencies in workflow and furthers its digital transformation journey and forms a more sustainable approach to curriculum management by replacing manual processes. The cost of licensing and implementation not to exceed \$2 million over a 5-year period. The cost of this purchase

will be proportionally allocated to Carbondale and Edwardsville.

This matter was recommended to the President by the Chancellors of SIU Carbondale and SIU Edwardsville.

Resolution

BE IT RESOLVED, By the Board of Trustees of Southern Illinois University in regular meeting assembled, That:

(1) The purchase of Coursedog Curriculum Management for SIU System campuses be and is hereby awarded to SHI International Corporation, Somerset, NJ, in an amount not to exceed \$2,000,000 for a 5-year contract.

(2) The Board of Trustees hereby authorizes the purchase of goods and services associated with this award.

(3) The purchase will be funded by the SIUC Student Technology Fee account and the SIUE Information Technology Services account.

(4) The President of Southern Illinois University be and is hereby authorized to take whatever action may be required in the execution of this resolution in accordance with established policies and procedures.

Southern Illinois University
Board of Trustees
July 10, 2025

APPROVAL OF PURCHASE: TRASH AND RECYCLING REMOVAL SERVICES,
EDWARDSVILLE CAMPUS, SIUE

Summary

This matter seeks approval for the purchase of Trash and Recycling services from Waste Management of Illinois, Inc. for the SIUE campus. The contract would be funded from departmental operating funds.

Rationale for Adoption

This contract provides for trash and recycling removal services on the Edwardsville, Alton, East St. Louis campuses and the St. Clair Head Start Centers. Subject to continued needs, satisfactory service and favorable market conditions, the University may renew the initial one-year contract for up to an additional four (4) one-year contracts ending June 30, 2030. The estimated cost of the five (5) year contract is \$2,000,000.00 and will be funded from departmental operating funds. The actual cost will depend on the University's usage and any increases to the buildings serviced on various campuses. One contractor, Waste Management of Illinois, Inc. responded to the invitation for bid. Waste Management of Illinois, Inc. will service Facilities Management, Morris University Center, University Housing, School of Dental Medicine, NCERC, St. Clair Head Start Centers, and Wyvetter H. Younge Higher Education Center.

Resolution

BE IT RESOLVED, By the Board of Trustees of Southern Illinois University in regular meeting assembled, That:

(1) The contract to provide trash and recycling removal services on Edwardsville, Alton, East St. Louis campuses and St. Clair Head Start Centers for up to five (5) years, be and are hereby awarded to Waste Management of Illinois, Inc., \$2,000,000.00.

(2) The contract will be funded from departmental operating funds.

(3) The President of Southern Illinois University be and is hereby authorized to take whatever action may be required in the execution of this resolution in accordance with established policies and procedure.

Southern Illinois University
Board of Trustees
July 10, 2025

APPROVAL TO ACQUIRE REAL ESTATE:
529 WEST MILLER AND 640 WEST HERNDON, SPRINGFIELD, ILLINOIS,
SCHOOL OF MEDICINE, SIUC

Summary

This matter seeks approval to acquire real estate located at 529 West Miller Street and 640 West Herndon Street, Springfield, Illinois, for the School of Medicine.

Rationale for Adoption

6 Policies of the Board A requires the Board of Trustees approval of the acquisition of real property.

The School of Medicine wishes to acquire these properties for the future expansion of the Springfield campus. These properties consist of vacant residential structures adjacent to existing University property, and are attractive for future development of the campus. The University plans to demolish the existing structures. The owner, parcel number, and purchase price for individual properties are as follows:

| Common Address | Owner | Parcel Number | Purchase Price |
|---------------------|---------------------------|-----------------|----------------|
| 529 West Miller St | Swaney, Shannon Elizabeth | 14-28.0-255-043 | \$75,000.00 |
| 640 West Herndon St | JLP Properties, LLC | 14-28.0-255-004 | \$90,000.00 |

The total purchase price of these properties is \$165,000 plus approximately \$87,000 for associated demolition and closing costs. These prices are consistent with recent property sales in the area. Funding for this project will come from non-appropriated funds available to the School of Medicine.

This matter is recommended for adoption by the Chancellor, SIUC, and the Dean and Provost of the School of Medicine.

Resolution

BE IT RESOLVED, By the Board of Trustees of Southern Illinois University in regular meeting assembled, That:

(1) The request to purchase the property at 529 West Miller Street, in the amount of \$75,000, and 640 West Herndon Street, in the amount of \$90,000, all in Springfield, Illinois, be and is hereby approved at a total cost of \$165,000 plus associated demolition and closing costs.

(2) Funding for these purchases shall be from non-appropriated funds.

(3) The President of Southern Illinois University be and is hereby authorized to take whatever action may be required in the execution of this resolution in accordance with established policies and procedures.

Southern Illinois University
Board of Trustees
July 10, 2025

APPROVAL TO ACQUIRE REAL ESTATE:
3421 CONIFER DRIVE,
SPRINGFIELD, SCHOOL OF MEDICINE, SIUC

Summary

This matter seeks approval to acquire real estate located at 3421 Conifer Drive, Springfield, Illinois, for the School of Medicine.

Rationale for Adoption

6 Policies of the Board A.1. requires the Board of Trustees approval of the acquisition of real property.

The School of Medicine wishes to acquire the property at 3421 Conifer Drive from Stephen L. Zaubi for the future expansion of teaching clinics. The parcel number of this property is 13-36.0-451-001. The property consists of a vacant 38,200 square feet commercial lot ready for development, and is immediately to the west of an existing University teaching clinic allowing for the easy expansion at this location. The purchase price is \$185,000 plus approximately \$21,500 for associated closing costs. This purchase is contingent on the University obtaining an appraisal consistent with the purchase price.

Funding for this project will come from non-appropriated funds available to the School of Medicine.

This matter is recommended for adoption by the Chancellor, SIUC, and the Dean and Provost of the School of Medicine.

Resolution

BE IT RESOLVED, By the Board of Trustees of Southern Illinois University in regular meeting assembled, That:

(1) The request to purchase the property at 3421 Conifer Drive, Springfield, Illinois, be and is hereby approved at a total cost of \$185,000 plus associated closing costs.

(2) Funding for this purchase shall be from non-appropriated funds.

(3) The President of Southern Illinois University be and is hereby authorized to take whatever action may be required in the execution of this resolution in accordance with established policies and procedures.

Southern Illinois University
Board of Trustees
July 10, 2025

APPROVAL: REMOVAL OF UNIVERSITY HALL FROM REVENUE BOND SYSTEM AND
REASSIGNMENT TO THE COLLEGE OF HEALTH AND HUMAN SCIENCES,
CARBONDALE CAMPUS, SIUC

Summary

This matter seeks Board approval for the removal of University Hall and the associated 5.43 acres of land from the Southern Illinois University Housing and Auxiliary Facilities System (the “System”) pursuant to Section 13(A)3(ii) of the Housing and Auxiliary Facilities System Revenue Bond Resolution (the “Resolution”), and the reassignment of the facility to the College of Health and Human Sciences for use in delivering integrated community health and social services.

Rationale for Adoption

University Hall, located on the Carbondale campus of Southern Illinois University, has historically been operated as part of the System, which consists of facilities financed through revenue bonds and used primarily for auxiliary functions, including student housing. In 2004, University Hall and the associated 5.43 acres of land was purchased for \$2.3 million using repair replacement reserve funds available to University Housing.

Due to changes in student housing demand, operational sustainability, and long-term facility planning, University Hall is no longer necessary for the continued use of student housing. During the past two years the facility has had limited use as housing for students enrolled in summer courses, summer housing for student athletes and visitors during the 2024 solar eclipse.

University Administration recommends the removal of University Hall, including the 5.43 acres of land that it sits on, from the System, effective August 15, 2025, and reassignment to the College of Health and Human Sciences. The facility will be repurposed to expand the College’s mission of providing accessible, interdisciplinary health and human services to residents of the region through clinical training, wellness programs, behavioral health services, and community-based outreach.

The repurposing of University Hall aligns with SIU’s strategic goals to improve community engagement, support workforce development in the health and human services sector, and enhance student experiential learning opportunities.

Section 13(A)3(ii) of the Resolution permits the removal of a facility from the System upon a determination by the Board that (i) such facility is no longer necessary, useful, or desirable to the System, and (ii) that the removal will not impair the structural soundness, efficiency or economic value of the remaining facilities of the System. An evaluation conducted by university staff and reviewed by bond counsel confirms that the removal of University Hall will not impair the integrity of the System nor adversely impact bondholders.

Considerations Against Adoption

University officials are aware of none.

Constituency Involvement

Not applicable.

Resolution

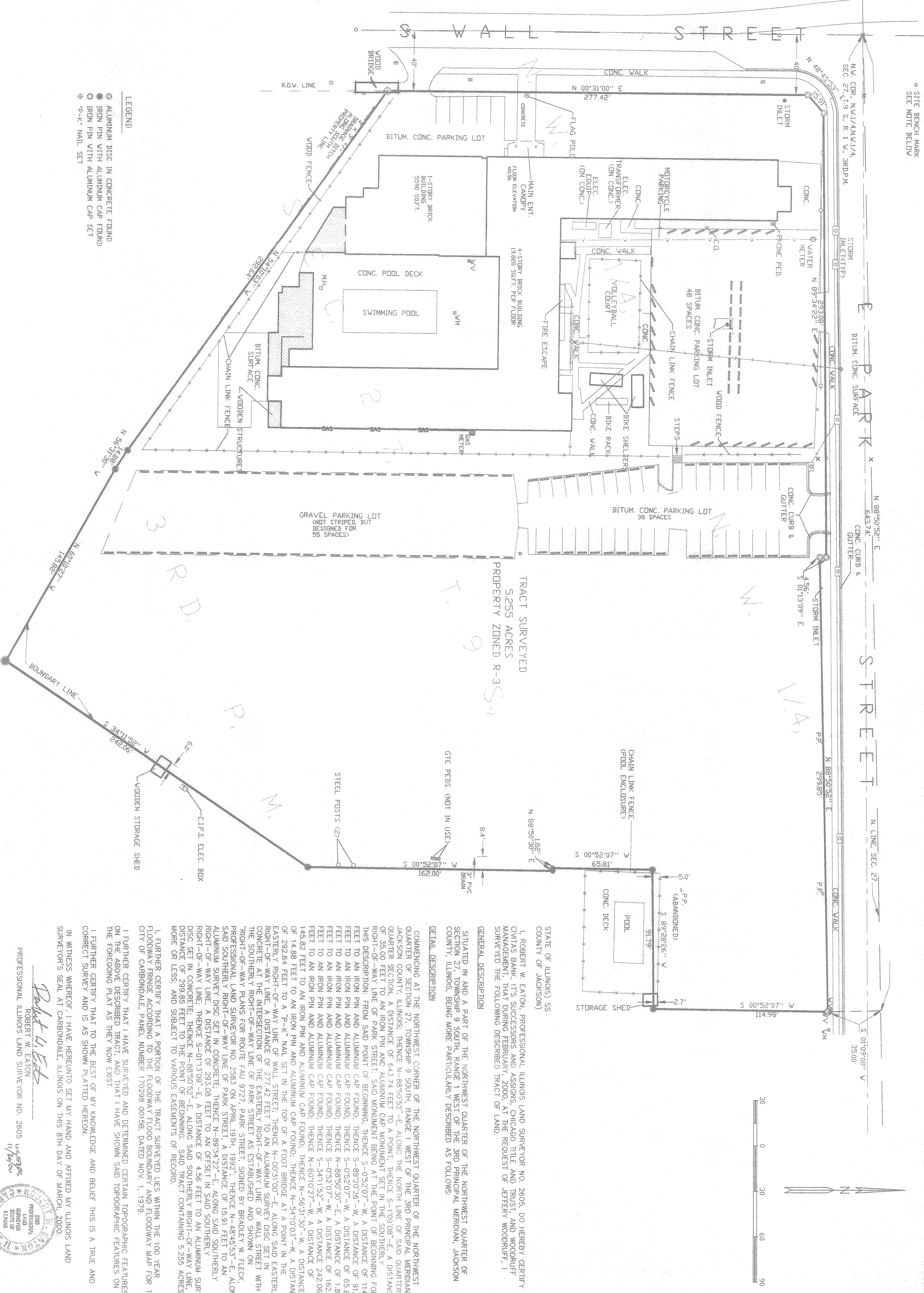
BE IT RESOLVED, By the Board of Trustees of Southern Illinois University in regular meeting assembled, That:

(1) In accordance with Section 13(A) 3(ii) of the Housing and Auxiliary Facilities System Revenue Bond Resolution adopted by the Board on April 29, 2021, as supplemented and amended, the Board hereby determines that University Hall is no longer necessary, useful, or desirable to the Housing and Auxiliary Facilities System and that its removal will not impair the structural soundness, efficiency or economic value of the remaining facilities of the System.

(2) University Hall, including the 5.43 acres of associated land, shall be removed from the Housing and Auxiliary Facilities System, effective August 15, 2025.

(3) University Hall and the land shall be reassigned to the College of Health and Human Sciences for the purpose of providing community health and social service programming, consistent with the academic and service mission of Southern Illinois University.

(4) The President of Southern Illinois University be and is hereby authorized to take whatever action may be required in the execution of this resolution in accordance with established policies and procedures.



STATE OF ILLINOIS) SS
COUNTY OF JACKSON)

I, ROBERT W. EATON, PROFESSIONAL ILLINOIS LAND SURVEYOR NO. 2605, DO HEREBY CERTIFY TO CIVITAS BANK, ITS SUCCESSORS AND ASSIGNS, CHICAGO TITLE AND TRUST, AND WOODRUFF MANAGEMENT, THAT DURING FEBRUARY, 2000, AT THE REQUEST OF JEFFERY WOODRUFF, I SURVEYED THE FOLLOWING DESCRIBED TRACT OF LAND.

GENERAL DESCRIPTION

SITUATED IN AND A PART OF THE NORTHWEST QUARTER OF THE NORTHWEST QUARTER OF SECTION 27, TOWNSHIP 9 SOUTH, RANGE 1 WEST OF THE 3RD PRINCIPAL MERIDIAN, JACKSON COUNTY, ILLINOIS, THENCE N-88°50'52"-E, ALONG THE NORTH LINE OF SAID QUARTER, A DISTANCE OF 643.74 FEET TO A POINT; THENCE S-1°09'08"-E, A DISTANCE OF 35.00 FEET TO AN IRON PIN AND ALUMINUM CAP FOUND; THENCE S-89°20'26"-W, A DISTANCE OF 91.79 FEET TO AN IRON PIN AND ALUMINUM CAP FOUND; THENCE S-0°52'07"-W, A DISTANCE OF 114.98 FEET TO AN IRON PIN AND ALUMINUM CAP FOUND; THENCE S-89°20'26"-W, A DISTANCE OF 65.81 FEET TO AN IRON PIN AND ALUMINUM CAP FOUND; THENCE S-0°52'07"-W, A DISTANCE OF 1.82 FEET TO AN IRON PIN AND ALUMINUM CAP FOUND; THENCE N-88°50'52"-E, A DISTANCE OF 162.00 FEET TO AN IRON PIN AND ALUMINUM CAP FOUND; THENCE S-34°11'52"-W, A DISTANCE OF 145.82 FEET TO AN IRON PIN AND ALUMINUM CAP FOUND; THENCE N-60°10'27"-W, A DISTANCE OF 145.82 FEET TO AN IRON PIN AND ALUMINUM CAP FOUND; THENCE N-56°31'30"-W, A DISTANCE OF 14.88 FEET TO AN IRON PIN AND ALUMINUM CAP FOUND; THENCE N-54°10'03"-W, A DISTANCE OF 292.64 FEET TO A "P-K" NAIL SET IN THE TOP OF A FOOT BRIDGE AT A POINT IN THE EASTERLY RIGHT-OF-WAY LINE OF WALL STREET; THENCE N-00°31'00"-E, ALONG SAID EASTERLY RIGHT-OF-WAY LINE, A DISTANCE OF 277.42 FEET TO AN ALUMINUM SURVEY DISC SET IN CONCRETE AT THE INTERSECTION OF THE EASTERLY RIGHT-OF-WAY LINE OF WALL STREET WITH THE SOUTHERLY RIGHT-OF-WAY LINE OF PARK STREET AS ESTABLISHED AND SHOWN ON "RIGHT-OF-WAY PLANS FOR ROUTE FAU 9727 PARK STREET, SIGNED BY BRADLEY W. FLECK, PROFESSIONAL LAND SURVEYOR NO. 2583 ON APRIL 19TH, 1992"; THENCE N-48°45'53"-E, ALONG SAID SOUTHERLY RIGHT-OF-WAY LINE OF PARK STREET, A DISTANCE OF 15.91 FEET TO AN ALUMINUM SURVEY DISC SET IN CONCRETE; THENCE N-89°34'22"-E, ALONG SAID SOUTHERLY RIGHT-OF-WAY LINE, A DISTANCE OF 293.08 FEET TO AN OFFSET IN SAID SOUTHERLY RIGHT-OF-WAY LINE; THENCE S-01°13'09"-E, A DISTANCE OF 4.56 FEET TO AN ALUMINUM SURVEY DISC SET IN CONCRETE; THENCE N-88°50'52"-E, ALONG SAID SOUTHERLY RIGHT-OF-WAY LINE, A DISTANCE OF 299.85 FEET TO THE POINT OF BEGINNING. SAID TRACT CONTAINING 5.255 ACRES, MORE OR LESS, AND SUBJECT TO VARIOUS EASEMENTS OF RECORD.

I, FURTHER CERTIFY THAT A PORTION OF THE TRACT SURVEYED LIES WITHIN THE 100 YEAR FLOODWAY FRINGE ACCORDING TO THE FLOODWAY FLOOD BOUNDARY AND FLOODWAY MAP FOR THE CITY OF CARBONDALE, PANEL NUMBER 170298 00158, DATED NOV. 1, 1979.

I FURTHER CERTIFY THAT I HAVE SURVEYED AND DETERMINED CERTAIN TOPOGRAPHIC FEATURES ON THE ABOVE DESCRIBED TRACT, AND THAT I HAVE SHOWN SAID TOPOGRAPHIC FEATURES ON THE FOREGOING PLAT AS THEY NOW EXIST.

I FURTHER CERTIFY THAT TO THE BEST OF MY KNOWLEDGE AND BELIEF THIS IS A TRUE AND CORRECT SURVEY AND IS AS SHOWN PLATTED HEREON.

IN WITNESS WHEREOF, I HAVE HEREUNTO SET MY HAND AND AFFIXED MY ILLINOIS LAND SURVEYOR'S SEAL AT CARBONDALE, ILLINOIS ON THIS 8TH DAY OF MARCH, 2000.

Robert W. Eaton
ROBERT W. EATON
PROFESSIONAL ILLINOIS LAND SURVEYOR NO. 2605
11/8/2000

PROFESSIONAL LAND SURVEYOR
STATE OF ILLINOIS
2000

MSN: 01380213_C-0100_00

| | | | |
|-------------------|--------------|-----------------|--------------------------------------------------------------------|
| JOB NO: 00-1242 | DATE: 3-1-00 | DRAWN BY: SK/RE | ASATURIAN EATON and Associates P.C. ENGINEERING and LAND SURVEYING |
| REVISIONS: 3-8-00 | | | 1440 Old West Main, P.O. Box 369, Carbondale, IL 62903 |

| |
|-------------------------------------------------------------------------------|
| Sheet Title: BOUNDARY + PARTIAL TOPOGRAPHIC SURVEY |
| Project Title: UNIVERSITY HALL 1101 S. WALL STREET CARBONDALE, ILLINOIS |

Southern Illinois University
Board of Trustees
July 10, 2025

PROJECT APPROVAL:
PUBLIC ELECTRIC VEHICLE CHARGING PARTNERSHIP WITH EGYPTIAN
ELECTRIC COOPERATIVE ASSOCIATION,
CARBONDALE CAMPUS, SIUC

Summary

This matter seeks project approval for the installation of public electric vehicle (EV) charging stations at three (3) Southern Illinois University Carbondale locations, through a partnership with the Egyptian Electric Cooperative Association (EECA). The sites will be located in Visitor Parking Lot 13 (east of the Student Center), at the Transportation Education Center, and at the entrance to Touch of Nature.

Rationale for Adoption

6 Policies of the Board B.1.c requires Board of Trustees' approval of fixed improvement projects to be located on property under jurisdiction of the Board by another government agency, a foundation or group.

Southern Illinois University Carbondale and EECA seek to enter into a cooperative agreement to install public electric vehicle charging infrastructure at three strategic campus locations. Each site will include high-power, level 3 DC fast chargers, with each charger capable of serving two vehicles simultaneously. This initiative supports the University's sustainability objectives and promotes statewide electric vehicle infrastructure development.

Under the agreement, SIU will grant EECA a license to install, operate, maintain, and remove the charging equipment. The charging stations will be accessible to the public 24 hours per day, 7 days per week. Each site will have one ADA compliant charging space. Each site must operate for at least five (5) years. EECA will maintain ownership and operational responsibilities for the charging equipment. Users will pay EECA directly for charging and parking time through a point-of-sale kiosk or a mobile application.

The Transportation Education Center and Touch of Nature sites are within the EECA electricity service territory and will not impact existing SIUC utility infrastructure or accounts. The Student Center location will be served by the SIUC main campus electricity district. EECA will provide a new electric distribution transformer that SIUC will install, own, and maintain. Facilities and Energy Management (FEM) will cover the nominal costs for removal of the existing transformer and installation of the new transformer. The site will be metered to track energy consumption, power demand, and

parking duration. FEM will invoice EECA monthly to recover energy costs and parking fees.

EECA has been awarded grant funding through the Illinois Environmental Protection Agency (IEPA) Driving a Cleaner Illinois program to cover up to 80% of project costs. This grant is authorized by the Electric Vehicle Act (20 ILCS 627/55) and the IEPA Charging Infrastructure Grant Program regulations (35 Ill. Adm. Code 285). EECA is providing the remaining required cost match and will recover their costs through user fees.

The Chancellor and the Vice Chancellor for Administration and Finance, SIUC, have recommended this matter to the President.

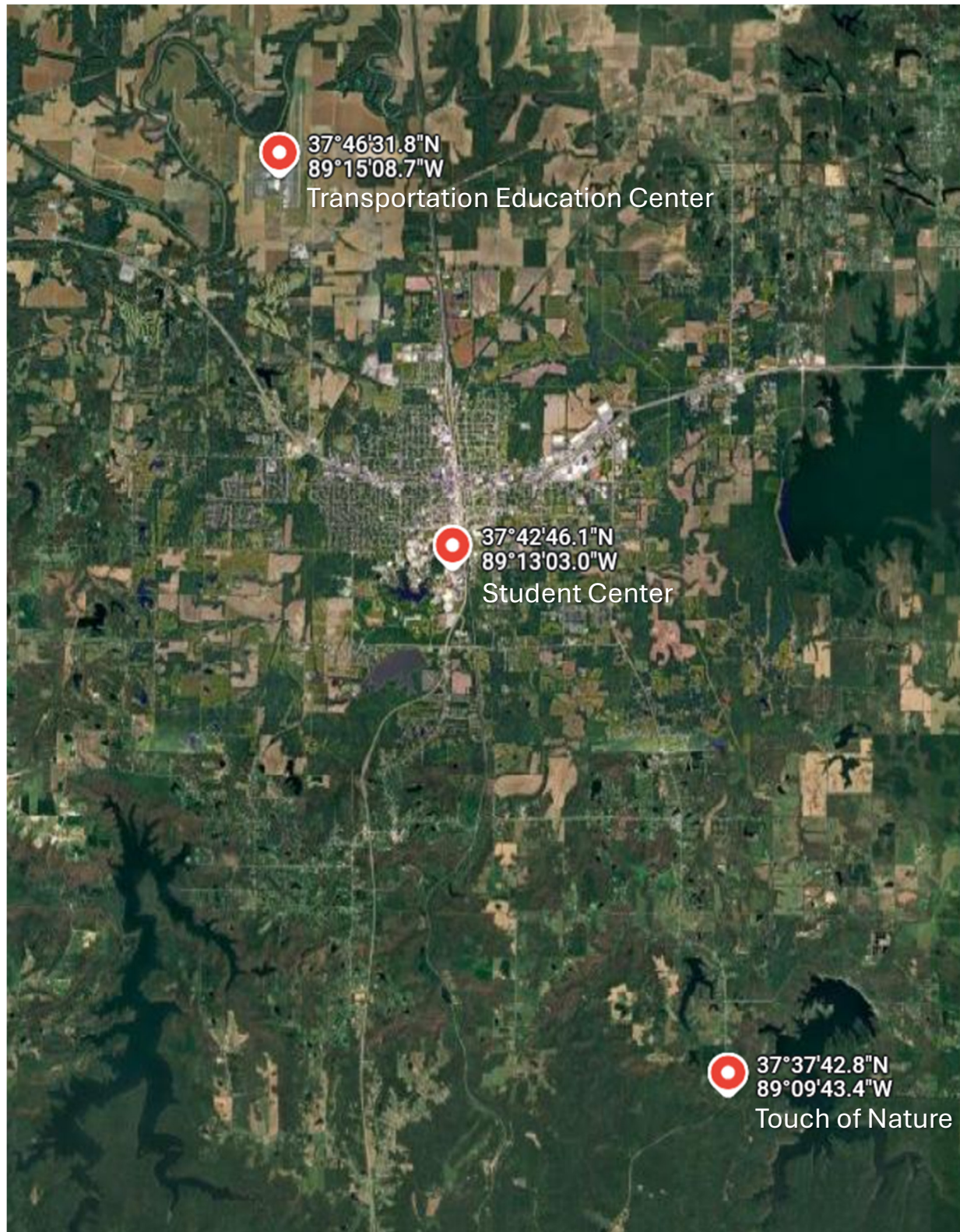
Resolution

BE IT RESOLVED, by the Board of Trustees of Southern Illinois University in regular meeting assembled, that:

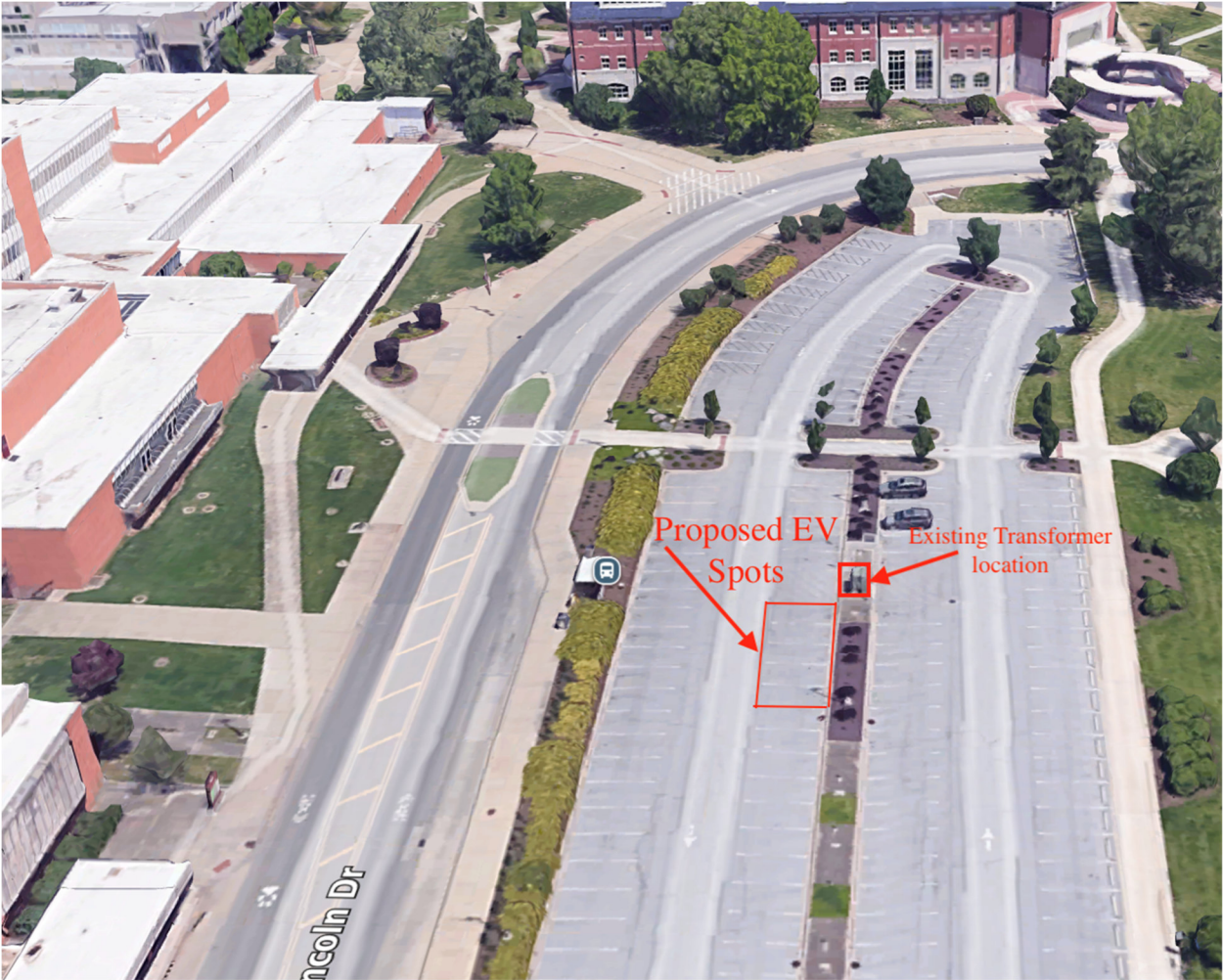
(1) Project approval for the installation of public electric vehicle charging stations in partnership with the Egyptian Electric Cooperative Association, at three locations on the Carbondale Campus, visitor Lot 13 (east of the Student Center), the Transportation Education Center, and Touch of Nature, be and is hereby approved.

(2) The President of Southern Illinois University be and is hereby authorized to take whatever action may be required in the execution of this resolution in accordance with established policies and procedures.

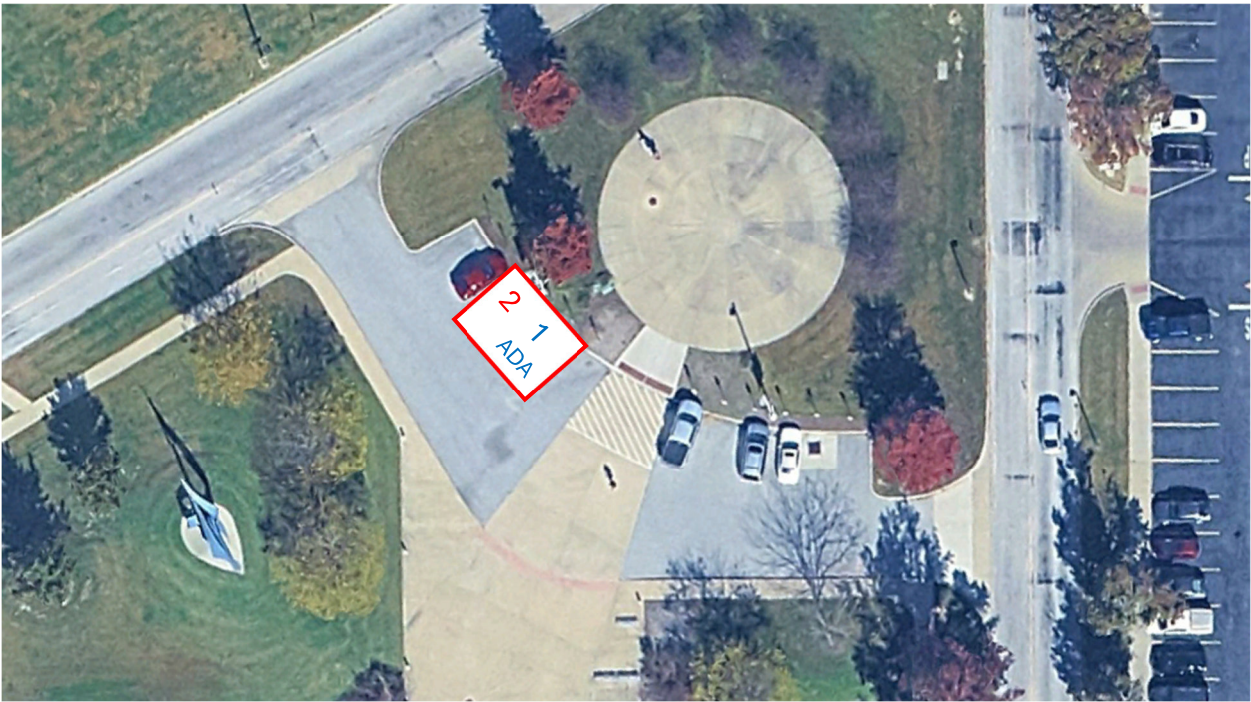
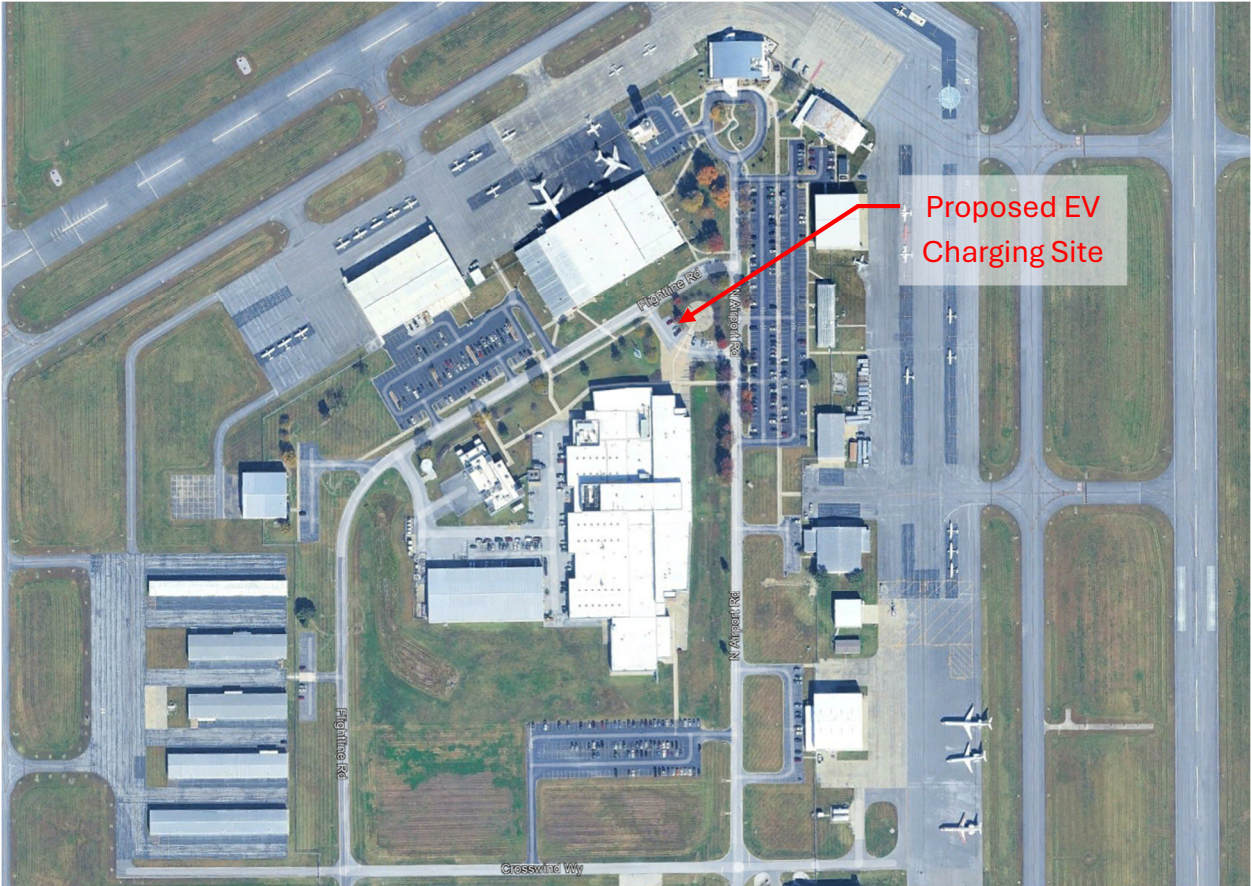
SIUC/EECA EV Charging Sites



Student Center Site



Transportation Education Center Site



Touch of Nature Site



Southern Illinois University
Board of Trustees
July 10, 2025

APPROVAL TO GRANT EASEMENTS
TO THE CITY OF CARBONDALE,
CARBONDALE CAMPUS, SIUC

Summary

This matter seeks approval for the granting of permanent and temporary easements over Southern Illinois University Carbondale (SIUC) property to the City of Carbondale for drainage and construction access related to the planned improvements along Pleasant Hill Road. The City of Carbondale is expected to bid the project in the fall of 2025.

Rationale for Adoption

The City of Carbondale is planning infrastructure improvements to Pleasant Hill Road that require access to and across property owned by the Board of Trustees of Southern Illinois University. To facilitate this work, the following permanent and temporary easements have been identified and surveyed by the City's engineering consultants:

Permanent Drainage Easements:

| Easement No. | Parcel ID | sq. ft. | Acres |
|--------------|---------------|---------|-------|
| PE1 | 15-29-300-001 | 976 | 0.022 |
| PE2 | 15-32-100-001 | 1,068 | 0.025 |
| PE3 | 15-32-100-001 | 5,671 | 0.130 |
| PE4 | 15-29-300-002 | 987 | 0.023 |
| PE5 | 15-32-100-001 | 2,021 | 0.046 |
| PE6 | 15-29-300-002 | 1,529 | 0.035 |

Temporary Construction Easements:

| Easement No. | Parcel ID | sq. ft. | Acres |
|--------------|---------------|---------|-------|
| TCE-2 | 15-31-200-002 | 750 | 0.017 |
| TCE-6 | 15-32-100-001 | 2,029 | 0.047 |
| TCE-7 | 15-32-100-001 | 4,724 | 0.108 |
| TCE-8 | 15-32-100-001 | 2,842 | 0.065 |
| TCE-9 | 15-29-300-002 | 554 | 0.013 |
| TCE-4 | 15-32-100-001 | 2,794 | 0.064 |

All easements are located adjacent to or near the existing Pleasant Hill Road corridor, and their granting will ensure successful completion of roadway and drainage improvements. The project will support enhanced infrastructure for both the University and the surrounding Carbondale community. There is no monetary exchange involved in this transaction; the easements are being conveyed at no cost to the City of Carbondale. Copies of all easements are on file with the Executive Secretary of the Board of Trustees for recording.

The Chancellor and Vice Chancellor for Administration and Finance, SIUC, have recommended this item to the President.

Considerations Against Adoption

There are no known considerations against adoption. The easements do not interfere with existing campus operations and are consistent with the long-term infrastructure objectives of the University and access to University Farms Properties.

Resolution

BE IT RESOLVED, By the Board of Trustees of Southern Illinois University in regular meeting assembled, That:

(1) Approval for the granting of the above described permanent and temporary easements to the City of Carbondale for public infrastructure improvements along Pleasant Hill Road is in the best interest of the University, is consistent with its objectives and purposes, and be and is hereby approved.

(2) The President of Southern Illinois University be and is hereby authorized to take whatever action may be required in the execution of this resolution in accordance with established policies and procedures.

Southern Illinois University
Board of Trustees
July 10, 2025

PROJECT APPROVAL AND NOTICE OF AWARD OF CONTRACTS BY
CAPITAL DEVELOPMENT BOARD:
SPRINGFIELD COMBINED LAB FACILITY CHILLERS AND COOLING TOWERS
REPLACEMENT, SCHOOL OF MEDICINE, SIUC

Summary

This matter seeks project approval and award of contracts by Capital Development Board for the Springfield Combined Lab Facility, chillers and cooling tower replacement.

Rationale for Adoption

6 Policies of the Board B.1.c requires the Board of Trustees approval for all projects in the jurisdiction of the Board accomplished by another governmental agency and notice of subsequent bidding process and award of contracts.

The Springfield Combined Laboratory Facility was built by the State of Illinois in 1988 as a laboratory space for the University, Illinois Department of Public Health, Illinois State Police, and Illinois Environmental Protection Agency. The mechanical systems are original to the construction of the facility with limited repair and replacement since the building opened. One of the two chillers, which provide heating and cooling to the facility, has failed and replacement is necessary for the comfort and safety of educational activities, laboratories, and occupants. The second chiller and cooling towers are near the end of their useful life and will need to be replaced. The project will replace both chillers, four cooling towers, and associated controls, pumps, valves, and roofing structures. The total cost of this project is estimated at \$4,500,000 and is funded by the Capital Development Board through an emergency funding mechanism.

The Capital Development Board has completed the award process. The successful contractor for this project is Henson Robinson Company, Springfield, Illinois.

The Chancellor, SIUC and the Dean and Provost of the School of Medicine recommended this matter to the President.

Resolution

BE IT RESOLVED, By the Board of Trustees of Southern Illinois University in regular meeting assembled, That:

(1) Project approval of the Springfield Combined Lab Facility Chillers & Cooling Towers, School of Medicine, SIUC, be and is hereby approved, and;

(2) Funding for this project will come from Capital Development Board funds, and;

(3) The President of Southern Illinois University be and is hereby authorized to take whatever action may be required in the execution of this resolution in accordance with established policies and procedures.

Southern Illinois University
Board of Trustees
July 10, 2025

APPROVAL TO GRANT PERMANENT UTILITY EASEMENTS
TO THE CITY OF SPRINGFIELD
SCHOOL OF MEDICINE, SIUC

Summary

This matter seeks approval to grant permanent utility easements to the City of Springfield on property located at 4801 Wabash Avenue, Springfield, Illinois.

Rationale for Adoption

6 Policies of the Board B.1.c requires the Board of Trustees' approval of fixed improvements projects to be located on property under jurisdiction of the Board by another government agency, a foundation or group.

The Board at their September 21, 2023, meeting approved the acquisition of approximately nine acres of undeveloped land at 4801 Wabash Avenue and at their December 5, 2024, meeting approved an easement for the development of Bradfordton Road. This matter seeks approval to grant permanent easements to the City of Springfield for utility infrastructure including electric, telecommunication, water, and sewer. Plans for this property include the future construction of a medical office building for use in clinical teaching programs for the School of Medicine by faculty, medical residents, students and patients. Martin Engineering Company prepared the exhibits and legal description of the property which are incorporated into the attached Water Main Easement and Right of Way Easement. University officials have reviewed these documents and found them acceptable.

This matter is recommended for adoption by the Chancellor, SIUC, and the Dean and Provost of the School of Medicine.

Resolution

BE IT RESOLVED, By the Board of Trustees of Southern Illinois University in regular meeting assembled, That:

(1) The request to grant two permanent utility easements to the City of Springfield, on property located at 4801 Wabash Avenue, Springfield, Illinois, be and is hereby granted as described in the attached Water Main Easement and Right of Way Easement.

(2) The President of Southern Illinois University be and is hereby authorized to take whatever action may be required in the execution of this resolution in accordance with established policies and procedures.

Prepared by and Return to:
Josh Stewart
CWLP
401 North 11th St.
Springfield, IL
62702

WATER MAIN EASEMENT

KNOW ALL MEN BY THESE PRESENTS, that **Board of Trustees of Southern Illinois University**, hereinafter called GRANTOR(S), in consideration of One Dollar (\$1.00) and other good and valuable consideration paid by the CITY OF SPRINGFIELD, an Illinois Municipal Corporation, hereinafter called the GRANTEE, the receipt and sufficiency of which is hereby acknowledged, does hereby grant, bargain, sell, transfer and convey to said GRANTEE, its successors and assigns, certain easements with the right to erect, construct, install, and lay and thereafter, use, operate, inspect, repair, maintain, replace and remove a water main(s) over, through, across, and under the following described property owned by GRANTOR(S) in Sangamon County, Illinois, to wit:

A Twenty foot (20') wide PERMANENT EASEMENT as described:

Part of the Southwest Quarter of the Southwest Quarter of Section 11, Township 15 North, Range 6 West of the Third Principal Meridian, Springfield, Sangamon County, Illinois, and being 10.00 feet on each side of the following described Centerline:

Commencing at a Survey Marker found at the Southwest corner of said Southwest Quarter of the Southwest Quarter of Section 11; thence North 88 degrees 45 minutes 54 seconds East on the South line of said Southwest Quarter, a distance of 166.00; thence North 01 degrees 14 minutes 06 seconds West, a distance of 70.69 feet to a point on the North right of way line of Wabash Avenue, being the point of beginning.

From said point of beginning; thence North 16 degrees 19 minutes 42 seconds West, a distance of 77.75 feet; thence North 28 degrees 06 minutes 99 seconds West, a distance of 151.72 feet to a point on the East right of way line of Bradfordton Road, being the Point of Terminus. Said 10 feet offset lines to be extended to or truncated by intersection right of way lines at both the Point of Beginning and the Point of Terminus.

Containing 4,580.953 square feet (0.105 acres), more or less.

On the following described property:

Part of the Southwest Quarter of Section 11, Township 15 North, Range 6 West of the Third Principal Meridian, further described as follows: Beginning at an iron pin marking the Southwest corner of said Section 11; thence North 01 degrees 04 minutes 10 seconds West, 691.42 feet along the West line of said Southwest Quarter, Section 11; thence North 88 degrees 49 minutes 54 seconds East, 710.20 feet; thence South 00 degrees 53 minutes 24 seconds East, 691.43 feet to a point on the South line of said Southwest Quarter, Section 11; thence South 88 degrees 49 minutes 54 seconds West, 708.03 feet along said South line to the point of beginning, EXCEPT that part described as follows: Beginning at an iron pipe marking the Southwest corner of said Section 11; thence North 01 degree 04 minutes 41 seconds West, 93.48 feet along the West line of said Southwest Quarter; thence South 65 degrees 30 minutes

50 seconds East, 76.10 feet to a point on the Northerly right-of-way line of FAU 8012 (Wabash Avenue); thence North 88 degrees 46 minutes 15 seconds East, 639.41 feet along said Northerly right-of-way line; thence South 00 degrees 54 minutes 44 seconds East, 61.28 feet to a point on the South line of said Southwest Quarter; thence South 88 degrees 50 minutes 12 seconds West, 707.88 feet along said South line to the point of beginning.

Part of Tax Identification Number: **21-11.0-300-037**

Common Address: **4801 W Wabash Ave.**

This easement is for the purpose of laying, constructing, reconstructing, removing, replacing, renewing, maintaining, repairing, operating and protecting water main(s); together with all necessary facilities incident to the construction, operation and maintenance of said water main(s), together with the perpetual right of access, ingress and egress at all times upon the above described property.

It is expressly covenanted and agreed between Grantor(s) and Grantee herein and as covenants running with the land described above and binding on the personal representatives and assigns as follows:

1. No permanent building or structure shall be constructed by Grantor(s), their personal representatives and assigns on said Permanent Easement; provided, however that the Grantor(s); their personal representatives and assigns may use said strip of ground for driveway improvements, parking area, fence or lawn improvements and other public utility uses and equipment, pipes, poles, wires, and other fixtures, as long as such use does not prevent or unreasonably interfere with the uses and purposes of these Easements, or access by the Grantee for the aforesaid uses and purposes. In the event that driveway improvements are constructed by the Grantor(s) or their personal representatives and assigns on said Permanent Easement, the Grantee agrees, that, if said driveway improvements are moved, disturbed, or damaged as a result of the grant of said Easements or any work done pursuant thereto, it will restore said driveway improvements as nearly as possible to its condition immediately prior to such removal, disturbance, or damage, at the expense of the Grantee.

2. In the event the same is disturbed by exercise of any of the rights herein granted, the Grantee shall restore the surface of any part of the property herein described to its grade and re-establish grass by seeding on any areas used as lawn and disturbed by such exercise. The Grantee shall replace without altering the grade any field tile on the property herein described which is damaged by such construction. No sub-soil shall be left on or near the surface of said land.

3. The Grantee shall make all reasonable efforts to preserve any trees, shrubbery or other items of landscaping which the Grantor(s) desires to preserve, during construction, but the Grantee shall have the right to remove without obligation to replace trees and shrubbery within the area covered by the Easements where such removal is reasonably necessary in the economical construction of the water main(s) or access of equipment during construction.

4. Grantor agrees to indemnify, defend and hold harmless the Grantee, its officers, employees, successors and assigns from and against any and all liability, loss demands, liens, damages, penalty, fines, interest, costs and expenses (including without limitation, reasonable attorneys' fees and litigation costs incurred by Grantee in connection therewith) and for any and all loss of life, injury to persons or damage to property which is due to the activities, operations or use of the Easement Premises (including, without limitation, any such loss, injury or damage due to the construction, maintenance, restoration or repair of the Easement Premises or any improvements thereto) by Grantor.

GRANTOR:

STATE OF ILLINOIS)
) SS
COUNTY OF SANGAMON)

Seal

(Notary Public)

Accepted by:

CITY OF SPRINGFIELD

By: _____
Michael T. Johnson

Exempt under provisions of 35 ILCS 200/, Sec. 31-45, Para. E, Real Estate Transfer Tax Law.

Date _____
Michael T. Johnson

STATE OF ILLINOIS)
) SS
COUNTY OF SANGAMON)

The foregoing instrument was acknowledged before me, this _____ day of
_____, A.D. 202__.

Seal

(Notary Public)

Return to:
CWLP Electric
Attn: Mr. Shaun Anders
1008 East Miller Street
Springfield, Illinois 62702

RIGHT OF WAY EASEMENT

KNOW ALL MEN BY THESE PRESENTS, that the Board of Trustees of Southern Illinois University, hereafter called GRANTOR(S), in consideration of One Dollar (\$1.00) and other good and valuable consideration paid by the CITY OF SPRINGFIELD, an Illinois Municipal Corporation, hereinafter called the GRANTEE, the receipt and sufficiency of which is hereby acknowledged, does hereby grant, bargain, sell, transfer and convey to said GRANTEE, its successors and assigns, a right of way easement for the construction, erection and continued operation, maintenance, repair, alterations, inspection, removal and replacement of electric lines and circuits and telecommunications facilities for distributing and transmitting of electrical energy and/or underground electric distribution and for the distribution and transmission of telecommunications services of the GRANTEE, its lessees, contractors or agents, including but not limited to telephone, video, data, community antenna television (CATV), internet access and wide area networks, on, over through, across, and under the following described property owned by GRANTOR(S) in Sangamon County, Illinois, to wit:

SEE ATTACHED EASEMENT PLAT AND LEGAL DESCRIPTION

Part of Tax Identification Number: 21-11-030-037
Common Address: 4801 Wabash Avenue, Springfield, Illinois

Together with all right of ingress and egress at all times over and upon said premises necessary for the full and complete use, occupation, and enjoyment of the easement hereby granted, and all rights and privileges incident thereto, including the right from time to time to cut, trim, and remove trees, brush, overhanging branches, and other obstruction s which may injure or interfere with the Grantee's use, occupation, or enjoyment of this easement and the operation, maintenance and repair of Grantee's electrical and telecommunications systems.

It is expressly covenanted and agreed between Grantor(s) and Grantee herein and as covenants running with the land described above and binding on the personal representatives and assigns as follows:

1. No building or structure shall be placed by Grantor(s), their personal representatives and assigns on said Right of Way Easement without the written consent of the Grantee. Grantor(s) understands and acknowledges that the purpose of this Easement is regulated by the National Electrical Safety Code ("NESC"). As the NESC promulgates safety clearances regarding electric and telecommunications facilities, it is hereby declared and agreed that any intrusion into the safety clearance area as dictated by the NESC, injures and interferes with Grantee's use, occupation and enjoyment of this Easement. Any such intrusion is prohibited.
2. In the event the same is disturbed by exercise of any of the rights herein granted, the Grantee shall restore the surface of any part of the property herein described to its grade and re-establish grass by seeding on any areas used as lawn and disturbed by such exercise.
3. The Grantee shall make all reasonable efforts to preserve any trees, shrubbery or other items of landscaping which the Grantor(s) desires to preserve, during construction, but the Grantee shall have the right to remove without obligation to replace trees and shrubbery within the area covered by the Easement where such removal is reasonable necessary in the economical use of the Easement.

IN WITNESS WHEREOF, I have set my hand and seal this ____ day of

_____, A.D. 2025.

BOARD OF TRUSTEES OF SOUTHERN ILLINOIS UNIVERSITY

STATE OF ILLINOIS)
) SS
COUNTY OF SANGAMON)

The foregoing Instrument was acknowledged before me, this ____ day of _____, 2025.

Notary Public

Accepted by:

CITY OF SPRINGFIELD

By: _____
Shaun Anders, Supt. of
Transmission & Distribution

STATE OF ILLINOIS)
) SS
COUNTY OF SANGAMON)

The foregoing Instrument was acknowledged before me, this ____ day of
_____, 2025.

Notary Public

CAPITAL TOWNSHIP

PART OF P.I.N. 21-11-300-037



MARTIN ENGINEERING COMPANY

of Illinois

CONSULTING ENGINEERS/LAND SURVEYORS

(ILLINOIS PROFESSIONAL DESIGN FIRM NO. 184-004556)

3695 SOUTH 6TH STREET FRONTAGE ROAD WEST, SPRINGFIELD, ILLINOIS 62703

Phone : (217) 698-8900, Fax : (217) 698-8922, E-Mail : mecmail@martinengineeringco.com

LEGAL DESCRIPTION

Part of the Southwest Quarter of the Southwest Quarter of Section 11, Township 15 North, Range 6 West of the Third Principal Meridian, Springfield, Sangamon County, Illinois, more particularly described as follows:

Commencing at a Survey Marker found at the Southwest corner of said Southwest Quarter of the Southwest Quarter of Section 11; thence North 88 degrees 45 minutes 54 seconds East on the South line of said Southwest Quarter, a distance of 141.18; thence North 01 degrees 14 minutes 06 seconds West, a distance of 73.75 feet to an iron pin found on the East right of way line of Bradfordton Road, being the point of beginning.

From said point of beginning; thence North 45 degrees 42 minutes 15 seconds West on said East right of way line, a distance of 36.19 feet; thence North 12 degrees 09 minutes 21 seconds West, a distance of 219.13 feet to a point on said East right of way line; thence North 05 degrees 10 minutes 38 seconds West on said East right of way line, a distance of 67.73 feet to an iron pin found; thence North 03 degrees 04 minutes 22 seconds West, a distance of 104.61 feet to an iron pin found; thence North 01 degrees 04 minutes 33 seconds West on said East right of way line; a distance of 176.97 feet; thence North 88 degrees 46 minutes 36 seconds East, a distance of 645.20 feet; thence South 00 degrees 53 minutes 07 seconds East; a distance of 117.06 feet; thence South 89 degrees 06 minutes 53 seconds West, a distance of 15.00 feet; thence North 00 degrees 53 minutes 07 seconds West, a distance of 96.97 feet; thence South 88 degrees 46 minutes 36 seconds West, a distance of 616.90 feet; thence South 00 degrees 36 minutes 44 seconds East, a distance of 30.37 feet; thence South 02 degrees 42 minutes 41 seconds East, a distance of 192.27 feet; thence South 05 degrees 08 minutes 45 seconds East, a distance of 84.20 feet; thence South 12 degrees 09 minutes 21 seconds East, a distance of 268.36 feet to the point of beginning. Containing 24,228.663 square feet (0.556 acres), more or less.

Southern Illinois University
Board of Trustees
July 10, 2025

APPROVAL TO GRANT RECIPROCAL DRAINAGE EASEMENT
TO MEMORIAL MEDICAL CENTER,
SCHOOL OF MEDICINE, SIUC

Summary

This matter seeks approval to establish reciprocal easement rights with Memorial Medical Center, doing business as Springfield Memorial Hospital, to facilitate the drainage of water into a retention pond located on the 4801 Wabash Avenue, Springfield, Illinois, shared property line, partially on both properties.

Rationale for Adoption

6 Policies of the Board B.1.c requires the Board of Trustees' approval of fixed improvements projects to be located on property under jurisdiction of the Board by another government agency, a foundation or group.

The Board at their September 21, 2023, meeting approved the acquisition of approximately nine acres of undeveloped land at 4801 Wabash Avenue and at their December 5, 2024, meeting approved an easement for the development of Bradfordton Road. This reciprocal drainage easement grants from Springfield Memorial Hospital to the University and the University grants to Springfield Memorial Hospital, a perpetual, non-exclusive easement for the purpose of draining water into a retention pond located on the shared property line, partially on both properties. Martin Engineering Company prepared the drainage exhibits and legal descriptions of the properties which are incorporated into the attached Reciprocal Drainage Easement Agreement. University officials have reviewed these documents and found them acceptable.

This matter is recommended for adoption by the Chancellor, SIUC, and the Dean and Provost of the School of Medicine.

Resolution

BE IT RESOLVED, By the Board of Trustees of Southern Illinois University in regular meeting assembled, That:

(1) The request to grant a reciprocal drainage easement between the Board of Trustees of Southern Illinois University and Springfield Memorial Hospital for property located at 4801 Wabash Avenue, Springfield, Illinois, be and is hereby granted as described in the attached Reciprocal Drainage Easement Agreement.

(2) The President of Southern Illinois University be and is hereby authorized to take whatever action may be required in the execution of this resolution in

accordance with established policies and procedures.

Prepared by and Return To:
BROWN, HAY & STEPHENS, LLP
Daniel L. Hamilton
Registration No. 6312982
205 S. Fifth St., Ste. 1000
Springfield, IL 62705
(217) 544-8491
Fax: (217) 544-9609
dhamilton@bhslaw.com

RECIPROCAL DRAINAGE EASEMENT AGREEMENT

This **RECIPROCAL DRAINAGE EASEMENT AGREEMENT** (“Agreement”) is made and entered into as of the date of last execution below (the “Effective Date”), by and between **MEMORIAL MEDICAL CENTER**, an Illinois not-for-profit corporation doing business as **SPRINGFIELD MEMORIAL HOSPITAL** (“SMH”), and the **BOARD OF TRUSTEES OF SOUTHERN ILLINOIS UNIVERSITY** on behalf of the Southern Illinois University School of Medicine (“SIU”). SMH and SIU are referred to herein individually as a “Party” and collectively as the “Parties.”

WHEREAS, SMH is the owner of certain real property located in Springfield, Illinois, more particularly described in Exhibit A attached hereto and made a part hereof (“SMH Property”);

WHEREAS, SIU is the owner of certain real property located in Springfield, Illinois, more particularly described in Exhibit B attached hereto and made a part hereof (“SIU Property”);

WHEREAS, the SMH Property and the SIU Property share a common boundary line, specifically the South line of the SMH Property and the North line of the SIU Property;

WHEREAS, the Parties desire to establish reciprocal easement rights to facilitate the drainage of water into a retention pond located on the shared property line, partially on both properties;

NOW, THEREFORE, in consideration of the mutual covenants and agreements contained herein, the Parties agree as follows:

1. Grant of Easement. SMH hereby grants to SIU, and SIU hereby grants to SMH, a perpetual, non-exclusive easement for the purpose of draining water into the Retention Pond located in the area identified as the Drainage Easement Area (“Drainage Easement Area”) as shown on the drainage exhibit plat attached hereto and incorporated herein as Exhibit C.

2. Maintenance of Retention Pond. A retention pond will be constructed within the Drainage Easement Area pursuant to that certain Reimbursement Agreement for Real Estate Development by and between the Parties. Upon construction of the areas around the retention pond, SMH shall be responsible

for maintaining the portion thereof located on the SMH Property, and SIU shall be responsible for maintaining the portion thereof located on the SIU Property. SIU shall be responsible for maintaining the outlets and other improvements associated with the retention pond located on the SMH Property, as identified in the honeycombed areas on Exhibit C (the "Outlets"). In the event that SIU fails to perform the required maintenance on the Outlets, SMH shall have the right, but not the obligation, to perform such maintenance.

3. Cost Sharing. Regardless of which Party performs the maintenance of the Outlets, costs associated with the maintenance of the Outlets shall be shared equally between SMH and SIU, as well as any dredging or other maintenance activities necessary for the proper operation of the retention pond.

4. Successors and Assigns. This Agreement and the easements, rights, and duties established herein shall run with the SIU Property and the SMH Property and shall be binding upon and inure to the benefit of the parties hereto and their respective successors and assigns.

5. Insurance. Each Party shall procure and maintain, at its own expense, the following insurance coverage throughout the term of this Agreement: (a) commercial general liability insurance or self-insurance with a minimum coverage amount of \$1,000,000 per occurrence and \$2,000,000 in aggregate covering events including but not limited to bodily injury, property damage, and personal injury arising out of or in connection with the use and maintenance of the Drainage Easement Area; and (b) property insurance or self-insurance covering all risks of physical loss or damage to the improvements and personal property located within the Drainage Easement Area, with a minimum coverage amount equal to the full replacement cost of such improvements and property.

6. Entire Agreement. This Agreement contains the entire agreement between the Parties regarding the subject matter addressed herein. No addition to or modification of any term or provision shall be effective unless in writing, signed by both SMH and SIU.

7. Recitals; Terms of Art. The Parties acknowledge that the Recitals set forth above are incorporated into this Agreement as if restated in full and shall be deemed an integral part hereof. Terms of art shall have the meaning so ascribed herein.

8. Partial Invalidity. If any portion of this Agreement shall be declared by any court of competent jurisdiction to be invalid, illegal or unenforceable, that portion shall be deemed severed from this Agreement and the remaining parts shall remain in full force as fully as though the invalid, illegal or unenforceable portion had never been part of this Agreement.

9. Governing Law. This Agreement shall be governed by and construed in accordance with the laws of the State of Illinois, without regard to the conflicts of law rules thereof. The Parties agree that the Illinois Court of Claims has exclusive jurisdiction for all actions against SIU, and that all other actions or proceedings arising directly, indirectly or otherwise in connection with this Agreement and the transactions contemplated hereby shall be litigated only in courts having a situs in Sangamon County, Illinois, and hereby consent and submit to the jurisdiction of state Circuit Court located within said county and state.

10. Relationship of Parties. For the purposes of this Agreement, no Party shall be deemed to be an independent contractor, agent, or employee of the other Party. Except as otherwise provided herein, no Party shall have authority to make any statements, representations or commitments of any kind, or to take any action that is binding on the other Party.

11. Waivers; Consent. No waiver by either Party of any provision shall be deemed a waiver of any other provision or of any subsequent breach by either Party of the same or any other provision.

12. Captions. The captions and Section numbers of this Agreement are for convenience of reference only and are in no way intended to describe, interpret, define, or limit the scope, extent, or intent of this Agreement or any provision hereof.

13. No Presumption. All the Parties hereto and their attorneys have had full opportunity to review and participate in the drafting of the final form of this Agreement and all documents attached as exhibits. Accordingly, such documents shall be construed without regard to any presumption or other rule of construction whereby any ambiguities within this Agreement would be construed or interpreted against the Party causing the document to be drafted.

14. Notices. Any notices or other communication required or permitted under this Agreement shall be in writing, and shall be (a) personally delivered, or (b) sent by certified or registered United States mail, postage prepaid, return receipt requested, or (c) by overnight delivery by a reputable courier to the address of the Party set forth in this Section or (d) sent to the email address of the Party set forth in this Section. Such notice or communication shall be deemed given (i) if sent by personal delivery or by overnight courier, when delivered in person, (ii) if sent by email, when evidence of successful transmission by email has been received by sender or, (iii) in the case of mailed notice, forty-eight (48) hours following deposit in the United States mail. Notice of change of address shall be given by written notice in the manner detailed in this Section.

If to SMH: Springfield Memorial Hospital
Attn: Kevin England
340 W. Miller Street
Springfield, IL 62702
Email: england.kevin@mhsil.com

Copy to: Brown, Hay & Stephens, LLP
Attn: Daniel L. Hamilton
205 S. 5th Street, Suite 1000
Springfield, IL 62701
Email: dhamilton@bhslaw.com

If to SIU: SIU School of Medicine
Attn: John Horvat
801 North Rutledge Street
Springfield, Illinois 62794
Email: jhorvat52@siu.edu

Copy to: Barber, Segatto, Hoffee, Wilke & Cate
Attn: Matthew J. Cate
831 E. Monroe Street
Springfield, IL 62701
Email: mjc@barberlaw.com

14. Counterparts. This Agreement and any amendment hereto may be executed in any number of counterparts by each Party, each of which when so executed and delivered shall be an original, and all of which together shall constitute one document. In proving this Agreement, it shall not be necessary to produce or account for more than one such counterpart signed by the Party against whom enforcement is sought. The Parties may execute this Agreement by facsimile, scanned Portable Document Format ("PDF") or other electronically transmitted signature, and such facsimile, scanned PDF, or other electronically transmitted document, including the signatures thereon, shall be treated in all respects as an original instrument bearing an original signature.

[Signature Pages Follow]

IN WITNESS WHEREOF, the parties have entered into this Agreement as of the date of last execution hereof.

SMH:

MEMORIAL MEDICAL CENTER, an Illinois not-for-profit corporation d/b/a SPRINGFIELD MEMORIAL HOSPITAL

By: MEMORIAL HEALTH SYSTEM, an Illinois not-for-profit corporation, its sole Member

By: _____
Kevin England, Its Senior Vice President and Chief Administrative Officer

By: _____
Katie Keim, its Chief Financial Officer

STATE OF _____)
) SS.
COUNTY OF _____)

The undersigned, a Notary Public in and for the above County and State, certifies that Kevin England, Senior Vice President and Chief Administrative Officer, and Katie Keim, Chief Financial Officer, of MEMORIAL HEALTH SYSTEM, an Illinois an Illinois not-for-profit corporation, the sole member of MEMORIAL MEDICAL CENTER, an Illinois an Illinois not-for-profit corporation d/b/a SPRINGFIELD MEMORIAL HOSPITAL, and personally known to me to be the same persons whose names are subscribed to the preceding instrument appeared before me this day in person and acknowledged that they signed and delivered the instrument as their free and voluntary act, and as the free and voluntary act of said corporation, for the uses and purposes set forth in that document.

Given under my hand and notarial seal this ____ day of _____, 20 ____.

[SEAL]

Notary Public

SIU:
BOARD OF TRUSTEES OF SOUTHERN
ILLINOIS UNIVERSITY

By: _____

Print Name: _____

Title: _____

STATE OF _____)
) SS.
COUNTY OF _____)

The undersigned, a Notary Public in and for the above County and State, certify that _____, personally known to me to be _____ of the BOARD OF TRUSTEES OF SOUTHERN ILLINOIS UNIVERSITY, and personally known to me to be the same person whose name is subscribed to the preceding instrument appeared before me this day in person and acknowledged that he/she had signed and delivered the instrument as his/her free and voluntary act, and as the free and voluntary act of the university, for the uses and purposes set forth in that document

Given under my hand and notarial seal this _____ day of _____, 202_____.

[SEAL]

Notary Public

EXHIBIT A

Legal Description of SMH Property

Part of the North Half of the Southwest Quarter of the Southwest Quarter of Section 11, Township 15 North, Range 6 West of the Third Principal Meridian, further described as follows: Commencing at an iron pin marking the Southwest corner of said Section 11; thence North 01 degrees 04 minutes 10 seconds West, 691.42 feet along the West line of said Southwest Quarter, Section 11 to the point of beginning; thence North 01 degrees 04 minutes 10 seconds West, 633.66 feet along said West line to the Northwest corner of said Southwest Quarter, Southwest Quarter, Section 11; thence North 88 degrees 50 minutes 08 seconds East, 1339.26 feet to the Northeast corner of said Quarter-Quarter Section; thence South 01 degrees 00 minutes 58 seconds East, 633.57 feet along the East line of said Quarter-Quarter Section; thence South 88 degrees 49 minutes 54 seconds West, 1338.68 feet to the point of beginning. EXCEPT that part falling in Wabash West Business Park Plat 2 recorded as Document No. 96-00606 in the Office of the Recorder of Sangamon County, Illinois.

Situated in Sangamon County, Illinois.

Common Address: 4685 Wabash Avenue, Springfield, Illinois 62711

PIN: 21-11.0-300-034

EXHIBIT B

Legal Description of SIU Property

Part of the Southwest Quarter of Section 11, Township 15 North, Range 6 West of the Third Principal Meridian, further described as follows: Beginning at an iron pin marking the Southwest corner of said Section 11; thence North 01 degrees 04 minutes 10 seconds West, 691.42 feet along the West line of said Southwest Quarter, Section 11; thence North 88 degrees 49 minutes 54 seconds East, 710.20 feet; thence South 00 degrees 53 minutes 24 seconds East, 691.43 feet to a point on the South line of said Southwest Quarter, Section 11; thence South 88 degrees 49 minutes 54 seconds West, 708.03 feet along said South line to the point of beginning, EXCEPT that part described as follows: Beginning at an iron pipe marking the Southwest corner of said Section 11; thence North 01 degree 04 minutes 41 seconds West, 93.48 feet along the West line of said Southwest Quarter; thence South 65 degrees 30 minutes 50 seconds East, 76.10 feet to a point on the Northerly right-of-way line of FAU 8012 (Wabash Avenue); thence North 88 degrees 46 minutes 15 seconds East, 639.41 feet along said Northerly right-of-way line; thence South 00 degrees 54 minutes 44 seconds East, 61.28 feet to a point on the South line of said Southwest Quarter; thence South 88 degrees 50 minutes 12 seconds West, 707.88 feet along said South line to the point of beginning.

Situated in Sangamon County, Illinois.

Common Address: 4801 Wabash Avenue, Springfield, Illinois 62711

PIN: 21-11.0-300-037